

## PR824 Women's 'Artisan' Fleece Jacket

### Description

Taking inspiration from our hugely popular 'Artisan' Fleece Gilet, this women's long sleeve style is designed in the same way, with a pleasing contrast coloured trim framing the collar, zip and cuffs. Featuring two zipped side pockets and two internal open pockets. Stitched side panels help the fleece fit comfortably, with a two way zipper allowing the wearer to zip from the hem upwards for practicality.

### Product Features:

- Contrast trim detail
- Zip through style with two-way zipper
- External zipped side pockets
- Front and back panels

### Available In:

XS, S, M, L, XL, 2XL, 3XL

### Certifications:

Sedex Member

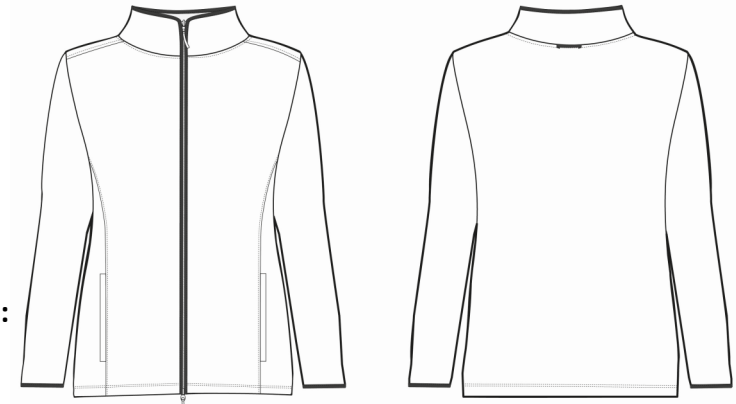


### Colours:

Black/Black	Black	Black c	0	0	0	100
Burgundy/Brown	Burgundy	209c	20	97	40	58
	Brown	4975c	36	84	59	85
Navy/Brown	Navy	533c	95	72	15	67
	Brown	4975c	36	84	59	85
Moss/Brown	Moss Green	2410c	63	26	73	51
	Brown	4975c	36	84	59	85
Black/Brown	Black	Black c	0	0	0	100
	Brown	4975c	36	84	59	85

### Fabric:

100% Polyester, 260gsm



### Suggested Decoration:

Embroidery

### Country of Origin:

Bangladesh

### Commodity Code:

6110309900

### Features:



### Wash Care:



### Carton Information:

Sizes	Carton	Pack	SKU's	Carton Weight	Carton Dimensions
All sizes	24	6	28	10k approx	60cm x 40cm x 22cm

### Garment Sizes:

Size	XS	S	M	L	XL	2XL	3XL
Chest to fit"	33	35	37	39	41	50	54
Chest to fit cm	84	89	94	99	104	109	114
Chest actual cm	86	91	96	101	106	112	118
Back length cm	63	65	67	69	71	73	75