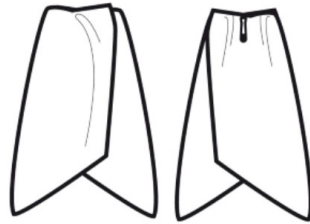


PR711 Clip-on Cravat

Description

A ladies clip-on cravat that attaches on to the collar by a steel clip. Great solution for those who work in hazardous environments who need to eliminate the risk of choking from neckwear.



Product Features:

- Steel clip fastening

Fabric:

100% Polyester plain weave

Sizes:

One size

Colours:

Black

Suggested Decoration:

Transfer Print, Embroidery

Wash Care Instructions:



WIPE CLEAN ONLY

Certifications:



Country of Origin:

United Kingdom

Commodity Code:

6215 20 0090

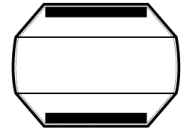
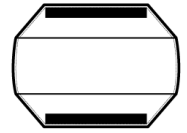
Carton Information:

Sizes	Carton	Pack	SKU's	Carton Weight	Carton Dimensions
One Size	100	10	1	3kg approx.	46cmx39cmx33cm

PR715 Epaulettes

Description

These Epaulettes sit on the shoulder for those who need a more authoritative approach to work uniforms. With an adjustable tear release fastening, these Epaulettes have an area of 9cm x 5cm for printing or embroidery.



Product Features:

- Decoration area of 9cm x 5cm
- Adjustable tear release fastening
- Sold in pairs

Fabric:

100% Polyester plain weave

Sizes:

One size

Colours:

Black, Navy

Suggested Decoration:

Transfer Print, Embroidery

Wash Care Instructions:



WIPE CLEAN ONLY

Certifications:



Country of Origin:

United Kingdom

Commodity Code:

6215 20 0090

Carton Information:

Sizes	Carton	Pack	SKU's	Carton Weight	Carton Dimensions
One Size	100	10	2	1.5kg approx.	46cmx39cmx33cm