

## PR688 'Viola' Linen-Look Cut Neck Beauty Tunic

### Description

A welcome addition to our Beautywear Collection, this tunic has a lovely soft linen fabric feel and is styled with the feminine figure in mind with front and back princess seams and side vents. Two contrast coloured yarns are woven together to give this pleasing marl effect. A simple over-the-head design with a concealed zip back and handy open side pockets. A round neck that cuts into a small V-shape finishes off an attractive stylish piece.

### Product Features:

- Open pockets to the sides
- Round neck V-cut neckline
- Concealed zip back
- Side vents

### Available In:

8, 10, 12, 14, 16, 18, 20, 22, 24

### Certifications:

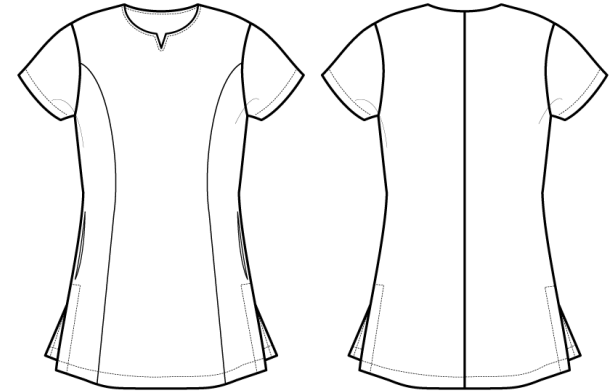


### Colours:

Colour	Pantone	C	M	Y	K
Heather Black	432C	65	43	26	78
Heather Blue	2378C	83	63	26	34
Heather Grey	Cool grey 10c	40	30	20	66

### Fabric:

100% Polyester plain weave, 185gsm.



### Suggested Decoration:

Screen Print, Transfer Print, Embroidery

### Country of Origin:

China

### Commodity Code:

6211 43 1000

### Features:

**EASY CARE**

### Wash Care:



### Carton Information:

Sizes	Carton	Pack	SKU's	Carton Weight	Carton Dimensions
All Sizes	12	3	27	6.5kg	60cmx44cmx17cm

### Garment Sizes:

Size	8	10	12	14	16	18	20	22	24
Bust to fit"	33	35	37	39	41	43	45	47	49
Bust to fit cm	84	89	94	99	104	109	114	119	124
Bust actual cm	94	99	104	109	114	120	126	132	138
Coll size	XS	S	M	L	XL	2XL	3XL	4XL	5XL
Back length cm	71	72	72	73	74	75	76	77	78