

PR683 'Blossom' Beauty and Spa Tunic

Description

Premier's 'Blossom' beauty and spa tunic has a feature button front fastening with a concealed zip. The short sleeves and princess seams along with side vents and a black pleat make for a practical garment that is easy to work in whilst retaining style.

Product Features:

- Flattering feminine fit with bust and back darts
- Mandarin collar
- Concealed zip through fastening and press stud
- Back pleat for ease of movement
- Princess seams

Available In:

6, 8, 10, 12, 14, 16, 18, 20, 22, 24

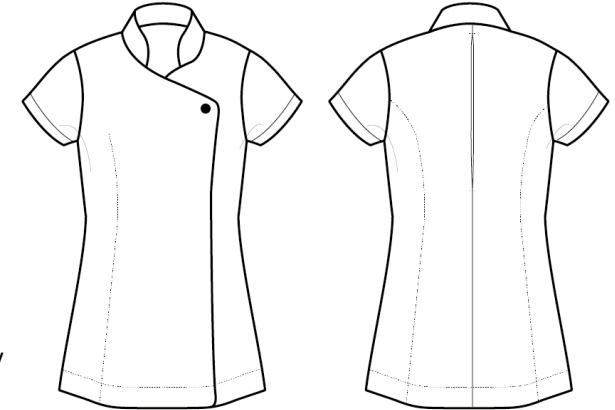
Certifications:

Colours:

| Colour | Pantone | C | M | Y | K |
|----------------|---------|----|-----|----|-----|
| Black | Black c | 0 | 0 | 0 | 100 |
| Dark Grey | 425c | 52 | 29 | 30 | 78 |
| Hot Pink | 215c | 66 | 100 | 26 | 24 |
| Navy | 533c | 95 | 72 | 15 | 67 |
| Purple | 7447c | 77 | 85 | 6 | 18 |
| Strawberry Red | 199c | 0 | 100 | 72 | 0 |
| White | White | 0 | 0 | 0 | 0 |

Fabric:

100% Polyester plain weave, 185gsm.



Suggested Decoration:

Screen Print, Transfer Print, Embroidery

Country of Origin:

China

Commodity Code:

6211431000

Features:

**EASY
CARE**

Wash Care:



Carton Information:

| Sizes | Carton | Pack | SKU's | Carton Weight | Carton Dimensions |
|-----------|--------|------|-------|---------------|-------------------|
| All Sizes | 12 | 3 | 70 | 6.2kg approx. | 60cmx44cmx17cm |

Garment Sizes:

| Size | 6 | 8 | 10 | 12 | 14 | 16 | 18 | 20 | 22 | 24 |
|----------------|-----|----|----|-----|-----|-----|-----|-----|-----|-----|
| Bust to fit" | 31 | 33 | 35 | 37 | 39 | 41 | 43 | 45 | 47 | 49 |
| Bust to fit cm | 79 | 84 | 89 | 94 | 99 | 104 | 109 | 114 | 119 | 124 |
| Bust actual cm | 89 | 94 | 99 | 104 | 109 | 114 | 120 | 126 | 132 | 138 |
| Call size | 2XS | XS | S | M | L | XL | 2XL | 3XL | 4XL | 5XL |
| Back length cm | 70 | 71 | 72 | 72 | 73 | 74 | 75 | 76 | 77 | 78 |