

PR567 Workready Men’s Straight Leg Jeans

Description

Straight-leg, Workready men’s jeans designed for durability and crafted for comfort. Long-lasting performance with a fadeless finish where colour locks in for 20 or more washes for a consistently smart, uniform look. Inspired by the high street but made for hard work, they deliver a uniform-ready look for hospitality and corporate teams, without feeling too formal. Responsibly sourced using preferred materials for a lower-impact uniform choice, these are these jeans for the job. Finished with metal rivets stitching and pockets. Available in regular and long leg lengths to suit every fit.

Product Features:

- Fadeless finish that locks in colour for 20 or more washes.
- Strong durable fabric with comfort stretch fit.
- Responsibly sourced using preferred materials.
- Classic straight leg styling.
- Five jean-style pockets with rivets and bar tacking for fabric reinforcement.

Available In:

2XS, XS, S, M, L, XL, 2XL, 3XL, 4XL. Regular leg: 31”/ 79cm. Long leg: 34”/ 86cm

Certifications:



Contains 10% RCS Certified Recycled Post Consumer Polyester
Certified by Control Union
CR-CUC-1189298



Trade with purpose



Member



STANDARD 100
11-55731
Shirley

Colours:

Colour	Pantone	C	M	Y	K
Stay Black	Black c	0	0	0	100
Always Indigo	2380 c	91	71	36	56

Fabric:

Stay Black: 98% Cotton, 2% Elastane, 375gsm
Indigo: 80% Cotton, 19% Recycled Polyester, 1% Elastane, 345gsm

Suggested Decoration:

Screen Print, Transfer Print, Embroidery

Country of Origin:

Bangladesh

Commodity Code:

6203421100

Features:



Comfort Stretch



Fadeless Finish



Responsibly Sourced

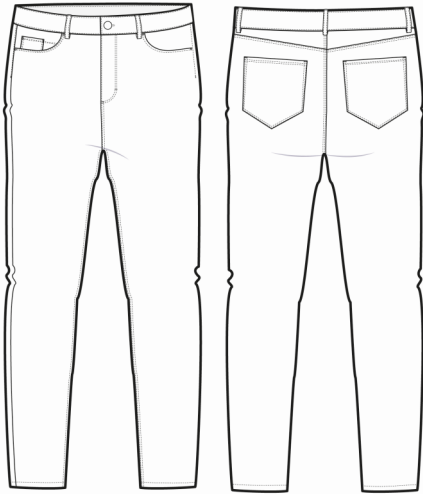


Straight Leg



RECYCLED POLYESTER

Wash Care:



Carton Information:

Sizes	Carton	Pack	SKU's	Carton Weight	Carton Dimensions
2XS—2XL	24	6	28	9kg	60cm x 40cm x 16cm
3XL—4XL	12	3	8	5kg	40cm x 32cm x 19cm

Garment Sizes:

Call Size	2XS	XS	S	M	L	XL	2XL	3XL	4XL
Waist to fit"	28	30	32	34	36	38	40	42	44
Waist to fit cm	71	76	80	86	92	96	100	106	110
DE, NL, FR	38	40	42	44	46	48	50	52	54
IT	44	46	48	50	52	54	56	58	60