

PR514 Women's 'Poppy' Healthcare Trousers

Description

Premier's 'Poppy' trouser has a cross over waistband with a two button fastening and zip for a comfortable trouser, suitable for long shifts in the Healthcare industry.

Product Features:

- Cross over waistband with two button fastening and zip fastening.
- Deep waistband
- Two slanted front pockets
- Belt loops
- Elasticated back waistband

Available In:

8, 10, 12, 14, 16, 18, 20, 22, 24

Certifications:



Colours:

Colour	Pantone	C	M	Y	K
Navy	533c	95	72	15	67

Fabric:

65% Polyester, 35% Cotton Twill, 195gsm.

Suggested Decoration:

Screen Print, Transfer Print, Embroidery

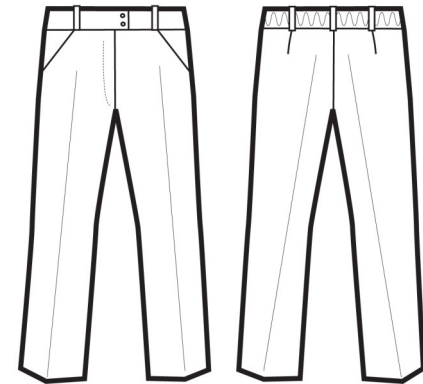
Country of Origin:

Bangladesh

Commodity Code:

6204 62 1100

Features:



Wash Care:



Carton Information:

Sizes	Carton	Pack	SKU's	Carton Weight	Carton Dimensions
All Sizes	24	6	9	12.2kg	58cmx38cmx20cm

Garment Sizes:

Size	8	10	12	14	16	18	20	22	24
Waist to fit"	24	26	28	30	32	34	36	38	40
Waist to fit cm	59	64	69	74	79	84	89	94	99
Waist actual cm	76	81	84	89	94	99	104	109	114
DE,NL	36	38	40	42	44	46	48	50	52
FR,ES,PT	36	38	40	42	44	46	48	50	52
IT	40	42	44	46	48	50	52	54	56