

PR359 Women's 'Denim-Pindot' Long Sleeve Shirt

Description

A smart duo of shirts that colour complement each other perfectly so you can mix and match as part of a team uniform. The denim version features a micro-spot pattern to the inner neckband and cuff, whilst the micro-spot version is embellished with the aforementioned denim to the inner neckband and cuff. Semi-fitted styling made with 100% cotton for style and comfort.

Product Features:

- Contrast coloured inner neckband and cuff.
- Double button cuff and sleeve guard.
- Semi-fitted style with bust and back darts.

Available In:

XS, S, M, L, XL, 2XL

Certifications:

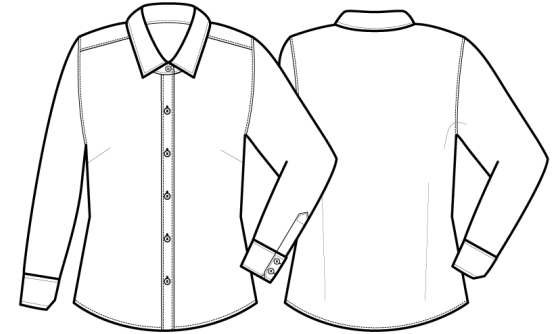


Colours:

Colour		Pantone	C	M	Y	K
Dots	White	White	0	0	0	0
	Indigo Denim	2380c	91	71	36	56
Indigo	Indigo Denim	2380c	91	71	36	56
	White	White	0	0	0	0

Fabric:

100% Cotton Ring Spun Denim, 155gsm.
100% Cotton Pinot Print Poplin, 115gsm.



Suggested Decoration:

Screen Print, Transfer Print, Embroidery

Country of Origin:

Bangladesh

Commodity Code:

6206300000

Features:



Wash Care:



Carton Information:

Sizes	Carton	Pack	SKU's	Carton Weight	Carton Dimensions
All Sizes	24	6	12	8kg approx	60cm x 40cm x 15cm

Garment Sizes:

Size	8	10	12	14	16	18
Bust to fit"	33	35	37	39	41	43
Bust to fit cm	84	89	94	99	104	109
Bust actual cm	92	97	102	107	112	117
Coll size	XS	S	M	L	XL	2XL
Back length cm	65	66	67	68	69	70