

## PR259 Men's 'Denim-Pindot' Long Sleeve Shirt

### Description

A smart duo of shirts that colour complement each other perfectly so you can mix and match as part of a team uniform. The denim version features a micro-spot pattern to the inner neckband and cuff, whilst the micro-spot version is embellished with the aforementioned denim to the inner neckband and cuff. Semi-fitted styling made with 100% cotton for style and comfort.

### Product Features:

- Contrast coloured inner neckband and cuff.
- Double button cuff and sleeve guard.
- Semi-fitted style

### Available In:

S, M, L, XL, 2XL, 3XL

### Certifications:

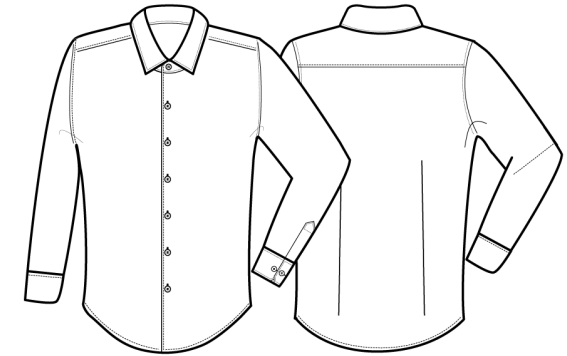


### Colours:

Colour	Pantone	C	M	Y	K	
Dots	White	White	0	0	0	0
	Indigo Denim	2380c	91	71	36	56
Indigo	Indigo Denim	2380c	91	71	36	56
	White	White	0	0	0	0

### Fabric:

100% Cotton Ring Spun Denim, 155gsm.  
100% Cotton Pindot Print Poplin, 115gsm.



### Suggested Decoration:

Screen Print, Transfer Print, Embroidery

### Country of Origin:

Bangladesh

### Commodity Code:

6205200090

### Features:



### Wash Care:



### Carton Information:

Sizes	Carton	Pack	SKU's	Carton Weight	Carton Dimensions
All Sizes	24	6	12	9.5kg approx	60cm x 40cm x 50cm

### Garment Sizes:

Call size	S	M	L	XL	2XL	3XL
Collar cm	39	41	43	45	47	49
Chest to fit"	34	38	42	46	50	54
Chest to fit cm	87	96	107	117	126	136
Chest actual cm	104	114	124	134	144	154
Back length cm	79	80	80	81	81	82