

## PR245 Men's Cotton Slub Chambray Long Sleeve Shirt

### Description

This semi-fitted men's shirt has an aesthetically pleasing texture which has been achieved by two contrast coloured yarns woven in an irregular pattern to create a slub effect. Long sleeves are fastened with a double button at the cuff with a sleeve guard facilitating a roll-back option on the arm. Soft collar styling with a top button fastening that leads to a six-button placket.

### Product Features:

- Slub yarn effect for texture and personality in the fabric
- Soft collar styling
- Two button cuff
- Semi fitted

### Available In:

S, M, L, XL, 2XL, 3XL

### Certifications:

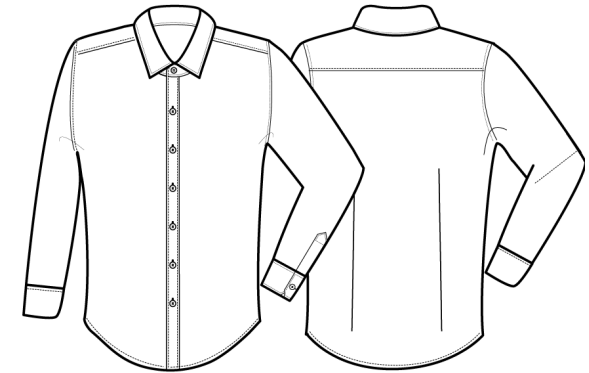


### Colours:

Colour	Pantone	C	M	Y	K
Grey	Cool grey 10c	40	30	20	66
Indigo	2380c	91	71	36	56
Red	207c	5	100	48	22

### Fabric:

100% Cotton Slub Chambray, 115gsm



### Suggested Decoration:

Screen Print, Transfer Print, Embroidery

### Country of Origin:

Bangladesh

### Commodity Code:

6205200090

### Features:



### Wash Care:



### Carton Information:

Sizes	Carton	Pack	SKU's	Carton Weight	Carton Dimensions
All Sizes	24	6	18	9.5kg approx	60cm x 40cm x 50cm

### Garment Sizes:

Call size	S	M	L	XL	2XL	3XL
Chest to fit"	39	41	43	45	47	49
Chest to fit cm	34	38	42	46	50	54
Chest actual cm	87	96	107	117	126	156
Back length cm	80	80	81	81	82	82