

PR151 'Colours Collection' Mid Length Apron

Description:

A mid-length Apron available in forty colours from the Premier 'Colours Collection'. A plain coloured apron that has ties long enough to double around the front.

Product Features:

- Mid length waist apron
- 90cm self-fabric ties

Available In:

One Size

Certifications:



Colours:

Colour	Pantone	C	M	Y	K	Colour	Pantone	C	M	Y	K	Colour	Pantone	C	M	Y	K
Apple	361c	77	0	100	0	Lilac*	2085c	9	16	0	0	Royal	7687c	100	78	0	18
Aqua*	344c	32	0	30	0	Lime*	2302c	37	9	83	11	Sage*	5497c	38	9	23	32
Aubergine	7449c	65	98	21	83	Magenta	233c	12	100	0	0	Sapphire*	2144c	95	53	0	0
Black*	Black c	0	0	0	100	Mid Blue*	2139c	79	49	17	15	Silver*	429c	21	11	9	23
Bottle*	7736c	91	14	78	60	Mocha*	7615c	50	61	57	13	Strawberry Red	199c	0	100	72	0
Brown	4975c	36	84	59	85	Natural*	4755c	3	16	20	9	Steel*	431c	45	25	16	59
Burgundy	209c	20	97	40	58	Navy*	533c	95	72	15	67	Sunflower*	7411c	0	42	75	2
Chestnut	7581c	0	64	70	60	Oasis Green*	5753c	42	16	80	58	Teal	3155c	100	9	29	47
Dark Grey*	425c	52	29	30	78	Olive*	7763c	46	26	84	66	Terracotta	7584c	0	70	100	17
Emerald*	7728c	93	0	75	55	Orange*	172c	0	73	87	0	Turquoise	7703c	79	2	10	11
Fuchsia	2046c	0	80	7	3	Pink*	707c	0	36	8	0	White	White	0	0	0	0
Hot Pink*	215c	66	100	26	24	Purple*	7447c	77	85	6	18						
Khaki*	7536c	11	13	30	32	Red	201c	7	100	68	32						
Lemon	1215c	0	6	53	0	Rich Violet	7677c	68	78	0	0						
Light Blue*	2707c	20	6	0	0												

Fabric:

65% Polyester, 35% Cotton Twill, 195gsm.

Suggested Decoration:

Screen Print, Transfer Print, Embroidery

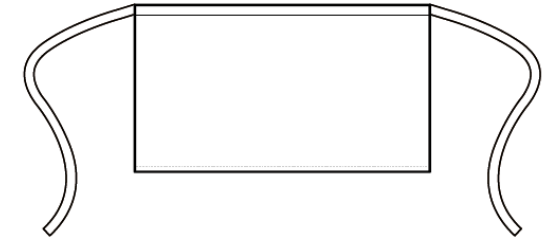
Country of Origin:

China

Commodity Code:

6211 43 1000

Features:



Wash Care:



Garment Sizes:

50cm long, 70cm wide.

Carton Information:

Sizes	Carton	Pack	SKU's	Carton Weight	Carton Dimensions
One Size	72	12	40	15.1kg	60cmx40cmx22cm