

PR123 'Espresso' Bib Apron

Description

This Apron combines polyester-cotton with soft faux leather for a really cool contemporary design. The top of the Apron has a faux leather trim with two large eyelets which the neckband loops through. The neckband is adjustable on each side with two press stud buttons. A centre pocket stitched down the middle to create two handy bellow style pockets completes this quirky Apron.

Product Features:

- Faux leather top trim and neckband
- Press stud buttons on neckband for height adjustment
- Two handy pleat pockets

Available In:

One Size

Certifications:



Colours:

Colour	Pantone	C	M	Y	K	
Black/ Brown	Black	Black c	0	0	0	100
	Brown	4975c	36	84	59	85
Black/ Black	Black	Black c	0	0	0	100
Khaki/ Brown	Khaki	7536c	11	13	30	32
	Brown	4975c	36	84	59	85
Navy/ Brown	Navy	533c	95	72	15	67
	Brown	4975c	36	84	59	85

Fabric:

65% Polyester, 35% Cotton Twill with 100% Polyurethane trim. 195gsm.

Suggested Decoration:

Screen Print, Transfer Print, Embroidery

Country of Origin:

Bangladesh

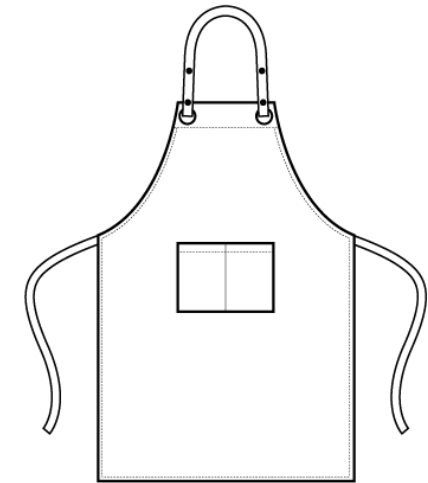
Commodity Code:

6211 43 1000

Features:



Wash Care:



Carton Information:

Sizes	Carton	Pack	SKU's	Carton Weight	Carton Dimensions
One Size	72	12	4	10kg approx	60cm x 40cm x 20cm

Garment Sizes:

81cm long, 70cm wide

Pocket Measurement: 25cm width, 16.5 cm depth