

PR101 Bib Apron

Description

A Polyester- Cotton bib apron in durable Klopman fabric that maintains its colour wash after wash. This heavyweight apron comes with anti-tangle ties and is designed to withstand the pressures of the working environment.

Product Features:

- Black anti-tangle ties
- Crease resistant finish
- Durable Klopman fabric

Available In:

One Size

Certifications:



Colours:

Colour	Pantone	C	M	Y	K
Black	Black c	0	0	0	100

Fabric:

65% Polyester, 35% Cotton Twill. Klopman 'Superbandmaster'. 210gsm

Suggested Decoration:

Screen Print, Transfer Print, Embroidery

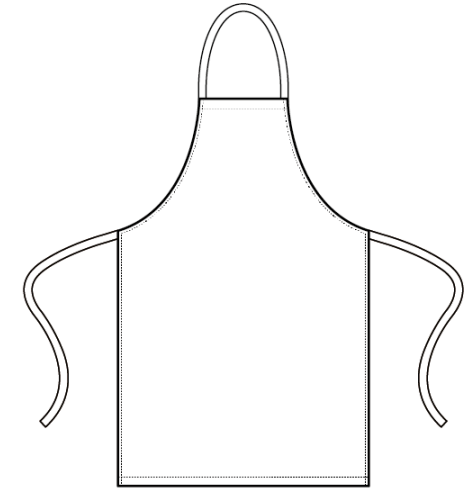
Country of Origin:

Bangladesh

Commodity Code:

6211 43 1000

Features:



Wash Care:



Carton Information:

Sizes	Carton	Pack	SKU's	Carton Weight	Carton Dimensions
One Size	72	12	1	17.3kg	65cmx48cmx22cm

Garment Sizes:

87cm long, 72cm wide.