

PRODUCT DECORATION GUIDE

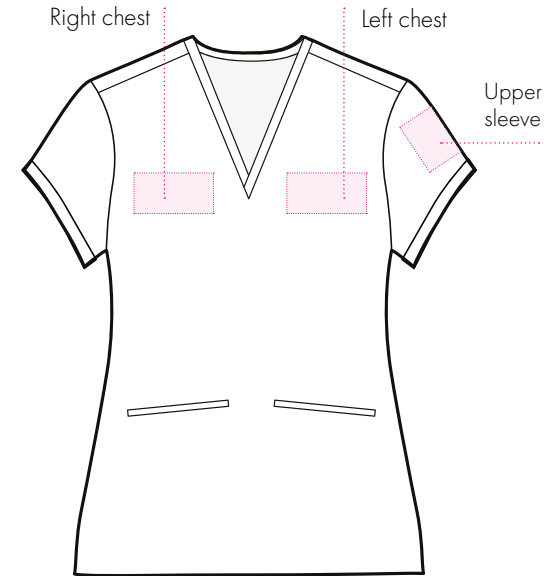
NN310 'Invincible' Women's Onna-Stretch Tunic

Here at Onna, we've thought of everything! That's why we've put together this quick tip sheet to help you get the best branding results on your everyday active carewear.

Make it professional with a company logo - keep it personal with staff names. However you choose to decorate, don't forget to do your own tests as machines and materials differ!

Fabric: 42% Polyester, 33% Recycled Polyester, 19% Viscose, 6% Elastane

Weight: 210gsm



[WATCH HOW WE DID IT >](#)

Type of Decoration	Method	Temp & Time	Pressure	Application Results	Dye migration test (24 hours after transfer applied)	Laundering Conditions	Laundering Results	Top Tip
Direct to Film Transfer (DTF) Decoration is printed directly onto a film and then transferred to the garment during a heat press process.	We used a cold peel and pressed our design for 10 seconds at 140°C using a medium pressure. Covered with grease proof paper to prevent scorch marks.	140°C. 10 seconds	Low to medium pressure	Adheres well, no visible mark from heat press	No visible dye migration	Washed at 40°C (or 60°C if necessary) for 60 minutes. Bio detergent.	Transfer adhered well. No visible change to transfer.	We used a Teflon pillow to raise the print area so stitch marks were not imprinted into the fabric during the heating process.
Heat Transfer Vinyl (HTV) A specialist vinyl material is applied to the garment with heat press machine to bond the vinyl to the fabric.	We created our transfer then pressed it on to the garment at 130°C for 5 seconds using low to medium pressure.	130°C. 5 seconds	Low to medium pressure	Adheres well, no visible mark from heat press	No visible dye migration	Washed at 40°C (or 60°C if necessary) for 60 minutes. Bio detergent.	Transfer adhered well. No visible change to transfer.	Make sure you use a low temperature and pressure applicable vinyl.
Embroidery Decoration applied using needle and thread on an embroidery machine.	We used two pieces of standard 40gsm backing fabric. Double backed in a criss-cross for stability. We used standard industry threads with a 60 ball-point needle and embroidered as normal.	N/A	N/A	Embroidered well. Wipe away embroidery ring marks with damp cloth and steam.	N/A	Washed at 40°C (or 60°C if necessary) for 60 minutes. Bio detergent.	Embroidery held well. No visible change to stitching.	Due to an element of stretch in the fabric, you may want to consider holding the fabric taut to prevent movement during embroidery.