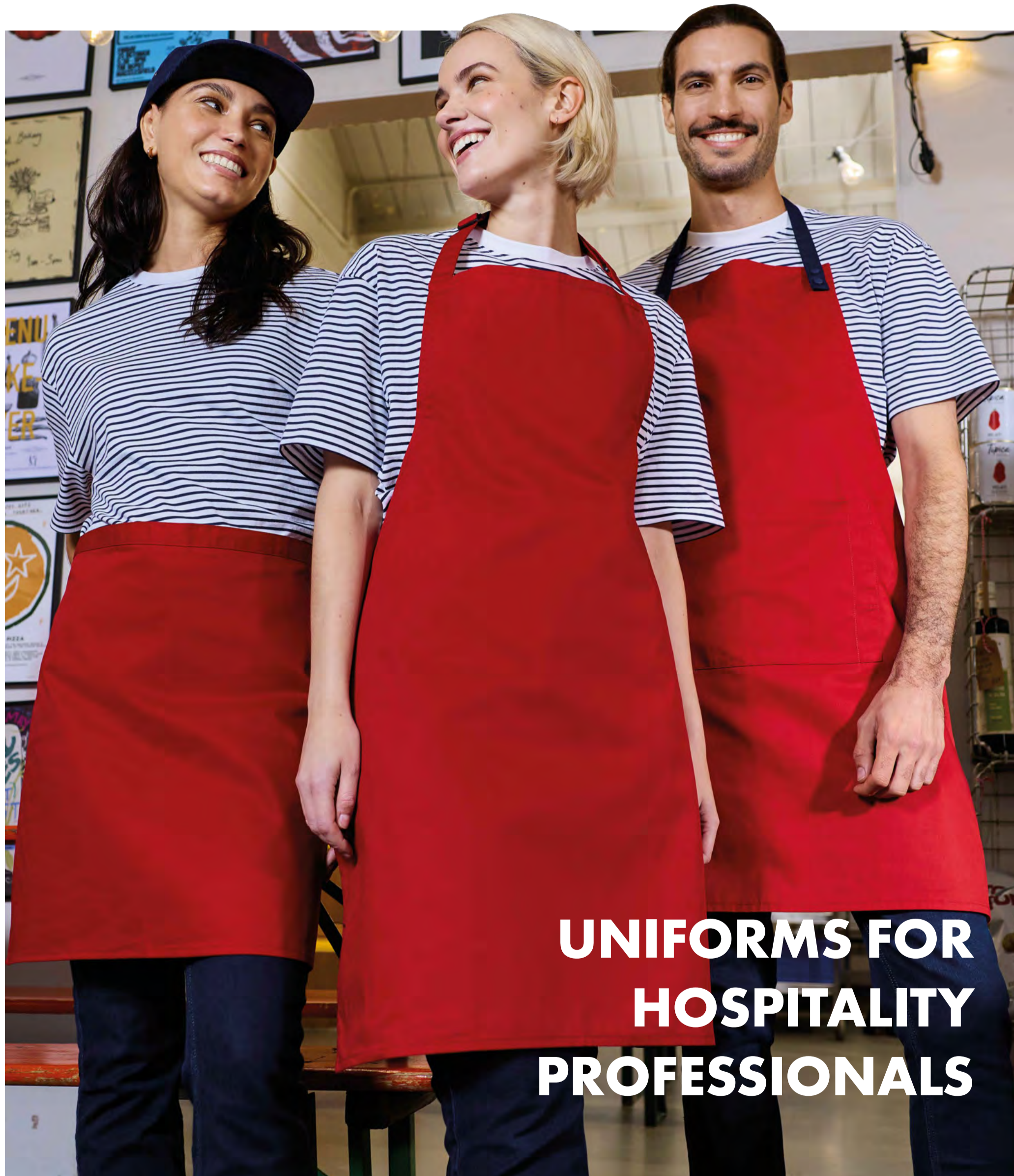


THE ARTISAN

PREMIER[®]
UNIFORMS THAT WORK FOR YOU

COLLECTION VOLUME 10



**UNIFORMS FOR
HOSPITALITY
PROFESSIONALS**

APRONS
A Palette of Possibilities

SHIRTS & TEE'S
From Classic to Contemporary

CHEFSWEAR
Crafted for Performance

OUTERWEAR
Sharp in Every Season



BRANDING YOUR BUSINESS

Welcome to The Artisan Magazine - where uniform becomes style, and style becomes identity.

We believe workwear should be more than functional. It should be worn with confidence, with intention and with pride. By bringing the language of fashion into everyday uniforms, we create pieces people genuinely want to wear.

This is where considered design meets real life. Elevated silhouettes. Modern fits. A refined approach to colour and detail. Each element is chosen to transform the everyday into something effortlessly polished.

Because when a uniform feels good, it changes how it's worn - and how it's seen.

From a single statement apron to a fully styled look, our collections are designed to build a cohesive, fashion-led identity for your team. One that feels current, expressive and unmistakably yours.

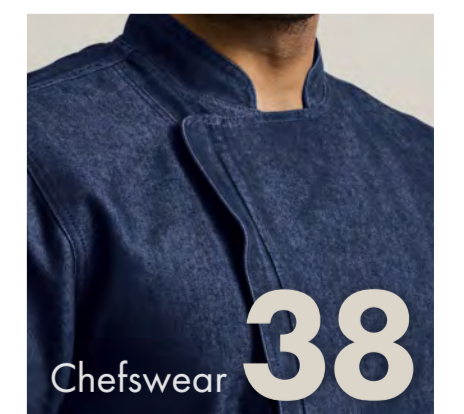
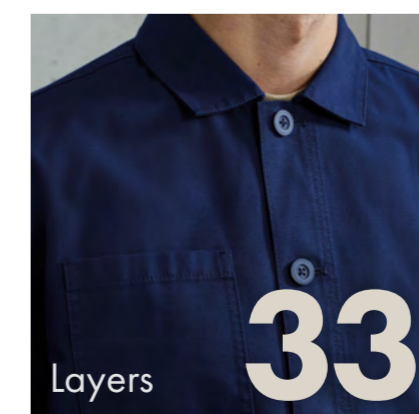
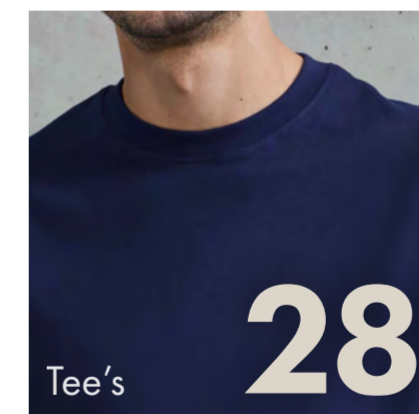
And as fashion evolves, so does responsibility. Many of our garments are crafted from preferred materials, including organic cotton and recycled fibres - proving that considered design and conscious choices can exist side by side.

For finishing touches, branding becomes part of the design itself. Subtle or bold, your identity can be seamlessly integrated through print and embroidery, creating a look that is as distinctive as it is wearable.

This is uniform, reimagined - designed not just for the role, but for the person wearing it.



CONTENTS





PR020

For more information about our sustainability commitment, visit our website, www.premierworkwear.com/sustainability



PR102

PR567



WHY WE'RE COMMITTED TO BETTER

By introducing better materials and processes into our supply chain we minimise the impact on the environment.

We are forward-thinking and fashion conscious, whilst working to be as environmentally responsible as we can be.

As a business we recognise and embrace the need for change in the industry and are very excited about the developments within our company.



BETTER SOURCING

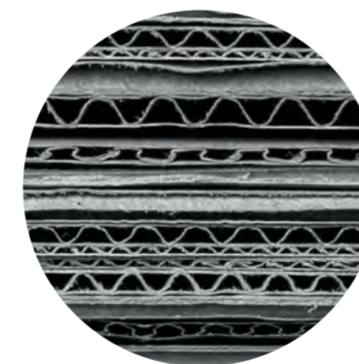
The recycled polyester and nylon in our garments comes from pre- and post-consumer materials which are certified to the Global Recycled Standard (GRS) or the Recycled Claim Standard (RCS).

The organic cotton we source is certified to the Global Organic Textile Standard (GOTS) or the Organic Content Standard (OCS).



BETTER FABRICS

Our clothing is designed to withstand the rigours of everyday wear and we encourage our customers to treat their clothing with respect and care to help extend their natural life cycle.



BETTER PACKAGING

Since 2021 we have reduced single unit plastic packaging and increased the amount of recycled content within these units.



BETTER TRANSPORT

We are striving to improve the way we import our goods into Europe and are working with key transportation partners to monitor and reduce the CO₂ levels we produce. We will always choose sea freight as our preferred method of transportation.



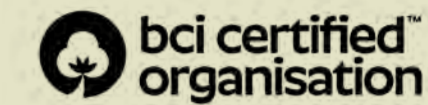
BETTER ENGAGEMENT

It's important to us to give back, which is why we donate and sponsor charities that benefit the communities where our products are made



FAIRTRADE COTTON

The FAIRTRADE Cotton Mark means that all of the cotton in the garment is Fairtrade certified, traded, audited and sourced from Fairtrade producers. We are supporting Fairtrade farmers by purchasing their cotton.



BCI CERTIFIED BUSINESS

We partner with The Better Cotton Initiative to improve cotton farming globally. Better Cotton's mission is to help cotton communities survive and thrive, while protecting and restoring the environment.



ORGANIC COTTON

The Global Organic Textile Standard (GOTS) was developed to define requirements for organic textiles. Products certified to GOTS contain at least 95% certified organically grown material.



ORGANIC COTTON BLEND

Styles that contain at least 95% organically grown material are certified to the Organic Content Standard 100. Styles that contain between 5-94% organically grown material are certified to the Organic Content Standard Blended.



RECYCLED MATERIALS

Styles that contain at least 50% recycled material are certified to the Global Recycled Standard. Styles that contain between 5 - 94% recycled material are certified to the Recycled Claim Standard Blended.



OEKOTEX STANDARD

Styles that display the OEKO-TEX STANDARD 100 logo have been tested to provide the confidence that each product has been made to a high standard of product safety.



The Sheds.

AT BUNBURY

At Premier, we love helping businesses reinvent themselves. It's what we do best. We design with you and for you - creating looks for the people who bring the energy, personality and passion that make hospitality spaces come alive every day. Because in this industry, people are the brand.

INTRODUCING UTILITY 2.0

Recently, we launched a brand-new concept in hospitalitywear - where professional uniform meets everyday fashion with the 'Utility 2.0' Collection. Before bringing it to market, we wanted to ensure this concept truly worked in real-life environments. While we understand the trends, it was important that they translate seamlessly into the fast-paced world of hospitality. We needed to know these styles could work hard too - standing up to the rigours of daily wash and wear, where durability and longevity is key.

Our brief was simple: find a venue that embodied everything that Utility 2.0 stands for—cool spaces, cool people, and even cooler vibes. After a team visit to The Sheds Rural Speciality Coffee Shop in Bunbury, Cheshire, we knew this was the place - and these were the people to trial the new collection.

THE PERFECT PARTNERSHIP

Describing themselves as, "A place where neighbours catch up over cappuccinos and friends bond over brunch," the space already had everything: atmosphere, personality and a welcoming energy. What it needed was a uniform to tie it all together. Working closely with owners Lucy and Alex Wootton, we curated a look that aligned with their brand while delivering on practicality.

For Lucy, the vision was clear,
“We wanted a cool, relaxed, modern look. Our vibe is creative and laid-back, and our staff are fun, energetic people - they deserve a uniform that reflects their personality”

THE LOOK

After introducing the vision for the collection with moodboards, a four-piece uniform was selected:



PR020 Oversized Tee
 A 100% BCI cotton tee - soft, breathable and comfortable against the skin - the perfect layer to build upon.

PR022 Chore Jacket
 A standout layering piece with strong high-street influence. This modern take on classic workwear offers versatility, multiple practical pockets and effortless styling - buttoned up or worn casually.

PR023 Ripstop Apron
 Built for durability. The ripstop fabric features a reinforced grid weave through the fabric so it resists rips and tears.

PR567 / PR577 Work-Ready Jeans
 Designed with a straight-leg fit and combined with elastane stretch for ease of movement from front-of-house to kitchen.

THE FINISHING TOUCHES

Once finalised, a trusted local reseller embroidered and printed The Sheds branding onto the uniforms. The result? A cohesive, elevated look that feels completely aligned with the café's identity.

THE FEEDBACK

"We look for uniforms that reflect our brand while being comfortable, durable, and easy to care for, though finding unisex styles can be a challenge. The Utility 2.0 collection fits our aesthetic perfectly - cool, casual and fashion led - with great feedback from the team."

Delighted with their new look, Lucy commented,
“At The Sheds our young, passionate team loves the comfort, style and flexibility to switch up their look day to day”



INTRODUCING UTILITY 2.0

Inspired by the energy of street food culture and based on iconic workwear styles, Utility 2.0 combines timeless styles with hard wearing materials to create a range that feels modern and tuned in. Key themes of functionality and longevity are underpinned by earthy tones, and anchored in classic uniform colours like black, navy and breton stripes.

Expect oversized unisex silhouettes that deliver a fresh, streetwear-inspired edge, using durable utility fabrics and practical styling.



UTILITY 2.0 'Utility 2.0' Ripstop Apron

PRO23 'Utility 2.0' Ripstop Apron
65% Recycled Polyester, 35% Cotton, 255gsm



**Durable strength with
a contemporary edge.**

85° Wash
Brandable



Woven ripstop
fabric



UTILITY 2.0

'Utility 2.0' Vest Apron

PRO24 'Utility 2.0' Vest Apron

60% Cotton, 40% Recycled Polyester, 310gsm

S-M: 70cm length x 36cm width, L-XL: 78cm length x 38cm width

85° Wash

Brandable



Contains 80% GRS Certified Recycled Polyester Content. Certified by Control Union. CR 2023/01098



PRO24

PRO24

Versatile, durable and built for practicality.

Decorations are for illustrative purposes only (garments are supplied blank)



PR102

100% Organic Cotton Bib Apron

20 COLOURS

PR102 100% Organic Cotton Bib Apron

100% Organic Cotton, 240gsm

85° Wash

Brandable

100% Cotton



Certified by Control Union. CR 2023/01098

Black

Steel

Dark Grey

Silver

Turquoise

Royal

Navy

Brown

Aubergine

Purple

Hot Pink

Burgundy

Red

Orange

White

Natural

Khaki

Lime

Apple

Bottle



PR114

PR112

Decorations are for illustrative purposes only (garments are supplied blank)

Cotton Aprons - Organic & Fairtrade Certified

PR112 Cotton Bib Apron, Organic & Fairtrade Certified
100% Cotton - Fairtrade Certified, 200gsm

PR114 Cotton Waist Apron, Organic & Fairtrade Certified
100% Cotton - Fairtrade Certified, 200gsm

- Brandable
- 40° Wash
- 100% Cotton

Denim Cotton Bib Apron - Organic & Fairtrade Certified

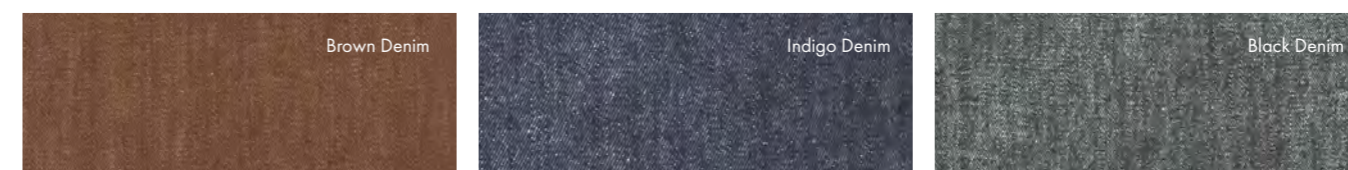
PR113 Denim Cotton Bib Apron - Organic & Fairtrade Certified
100% Cotton, Organic & Fairtrade Certified, 235gsm

- Brandable
- 40° Wash
- 100% Cotton



PR113

Decorations are for illustrative purposes only (garments are supplied blank)



PR120



Black Dark Grey Navy Red White

Recycled Polyester & Organic Cotton Apron

PR120 Recycled Polyester and Cotton Bib Apron, Organic & Fairtrade Certified
65% Recycled Polyester, 35% Cotton, Organic & Fairtrade Certified, 280gsm

- 60° Wash
- Brandable





PR127

PR128



▪ Adjustable buckle



▪ Contrast pocket with rivet detail



Contrast Denim

PR127 'Domain' Contrast Denim Bib Apron

70% Cotton, 30% Polyester, 265gsm

PR128 'Domain' Contrast Denim Waist Apron

70% Cotton, 30% Polyester, 265gsm

85° Wash Cotton Rich Brandable



Black Denim

Indigo Denim

PR128



Black Denim

Indigo Denim

PR127

Jean Stitch Denim Aprons

PR125 Jean Stitch Denim Waist Apron

70% Cotton, 30% Polyester, 265gsm

85° Wash

Cotton Rich

Brandable



PR126 Jean Stitch Denim Bib Apron

70% Cotton, 30% Polyester, 265gsm



PR126

PR125

Indigo Denim

Black Denim



PR135



PR136

Waxed-look Cotton Aprons

PR134 'District' Waxed-Look Bib Apron
100% Cotton Denim with Acrylic 'Waxed Look' Coating, 350gsm

PR135 'Division' Waxed-Look Waist Apron
100% Cotton Denim with Acrylic 'Waxed Look' coating, 350gsm

PR136 'Division' Waxed-Look Bib Apron with Faux Leather
100% Cotton Denim with Acrylic 'Waxed Look' coating, 350gsm

40° Wash 100% Cotton Brandable



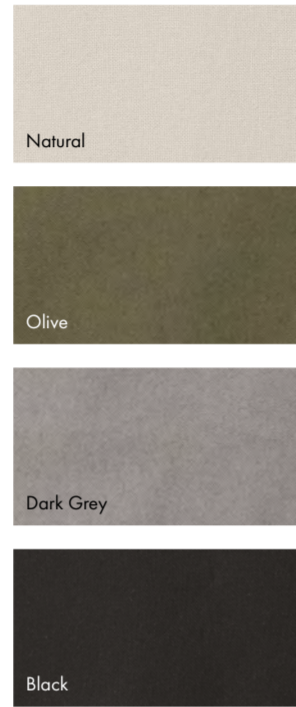
PR134



'Artisan's Choice' Double Pocket Canvas Apron

PR181 'Artisan's Choice' Double Pocket Canvas Apron

60% Cotton, 40% Recycled Polyester, 310gsm



Can be worn as a waist apron



60° Wash

Brandable

Black



PR181



PR182

'Clip & Clasp' Cross-Back Bib Apron

PR182 'Clip & Clasp' Cross-Back Bib Apron

60% Cotton, 40% Recycled Polyester, 310gsm



60° Wash

Brandable



'Barley' Contrast Stitch Bib Apron

PR121 'Barley' Contrast Stitch Bib Apron

65% Recycled Polyester, 35% Cotton, 195gsm



Contrast stitching

PR121



Black/Charcoal

Navy/Camel

Olive/Chestnut

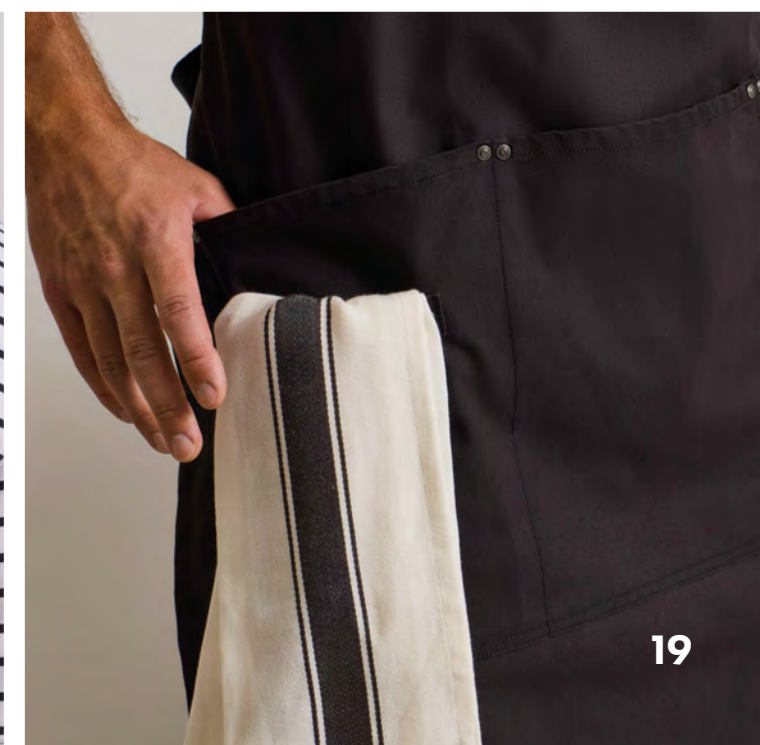
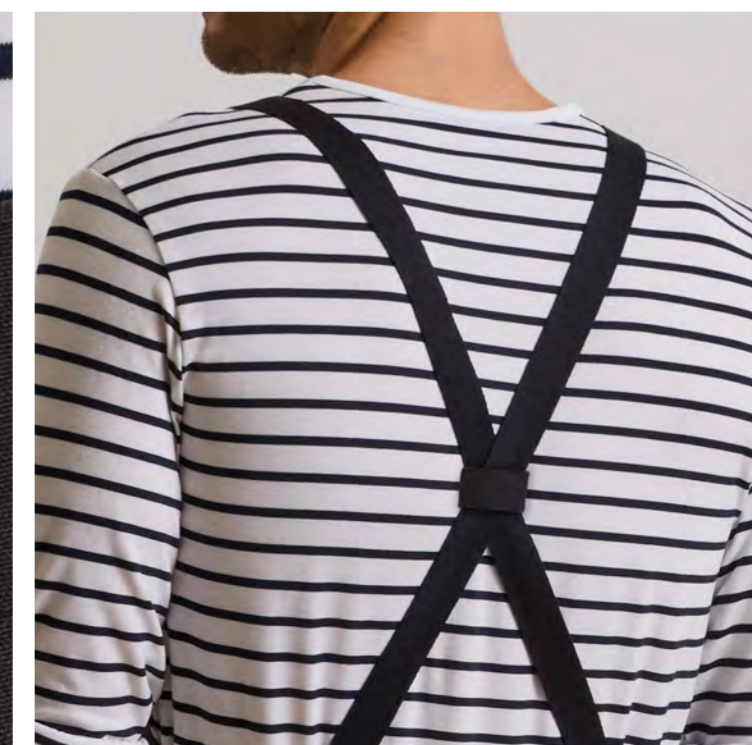
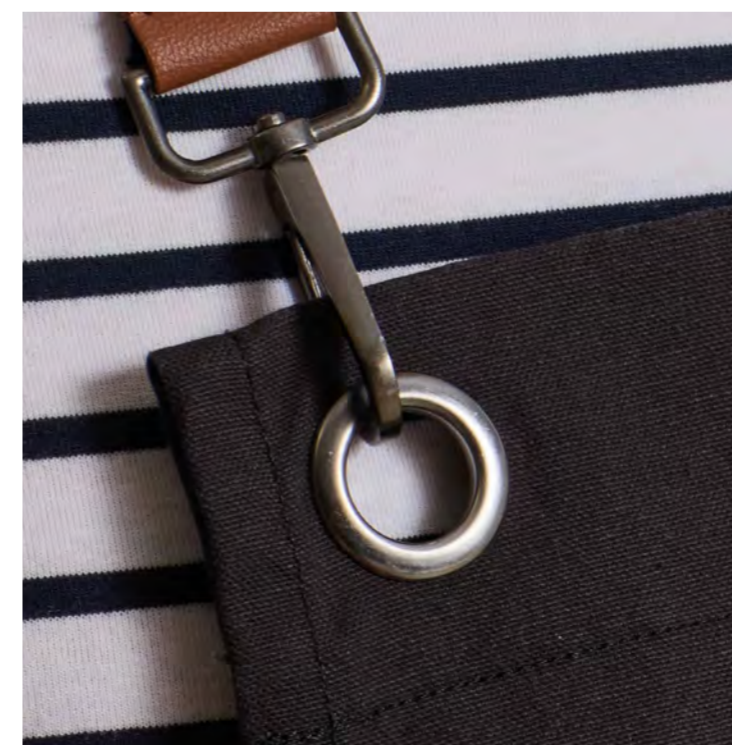
Khaki/Brown



60° Wash

Brandable

Decorations are for illustrative purposes only (garments are supplied blank)



PR144



▪ Faux leather cloth holder



▪ Faux leather neckband and buckle

'Annex' Oxford Bib Apron

PR144 'Annex' Oxford Bib Apron

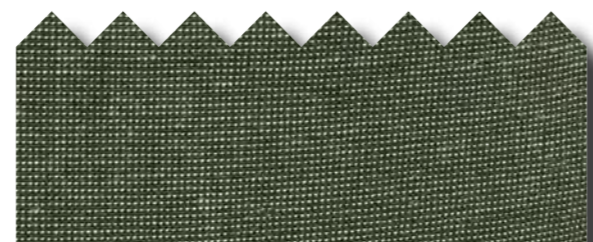
100% Cotton Yarn Dyed Oxford Weave, 220gsm

60° Wash 100% Cotton Brandable



Black Navy Moss Burgundy Mustard

Yarn Dyed Oxford Weave



PR123



Decorations are for illustrative purposes only (garments are supplied blank)

'Espresso' Bib Apron

PR144 'Espresso' Bib Apron

65% Polyester, 35% Cotton with faux leather trim, 195gsm

60° Wash Easy Care Brandable



Black/Black

Black/Brown

Navy/Brown

Khaki/Brown



PR130

PR137

'Calibre' Cotton Canvas Aprons

PR130 'Calibre' Heavy Cotton Canvas Bib Apron
100% Cotton Canvas, 320gsm

PR137 'Calibre' Heavy Cotton Canvas Pocket Apron
100% Cotton Canvas, 320gsm

85° Wash | 100% Cotton | Brandable



Cross-Back 'Barista' Bib Apron

PR129 Cross-Back 'Barista' Bib Apron

Canvas: 100% Cotton, 320gsm. Denims: 70% Cotton, 30% Polyester, 265gsm



85° Wash | Brandable



PR129

'Chino' Cotton Apron

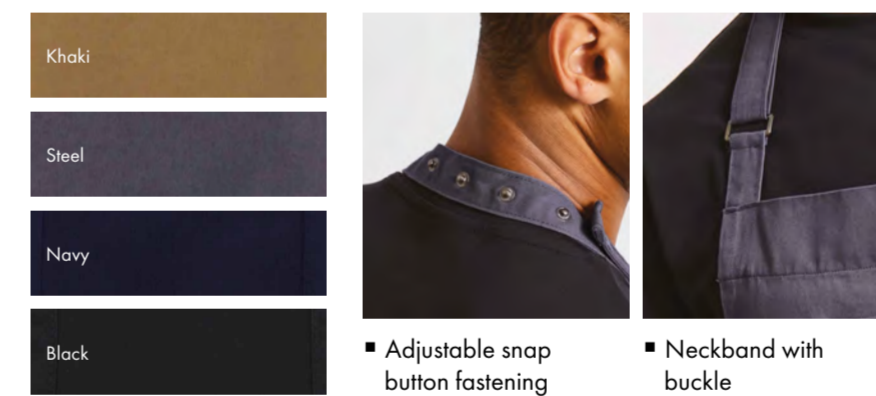
85° Wash

100% Cotton

Brandable

PR132 'Chino' Cotton Apron

100% Cotton, 235gsm



Adjustable snap button fastening

Neckband with buckle



PR132

PR138

'Metro' Hip Apron

100% Cotton†

Brandable

85° Wash

PR138 'Metro' Hip Apron

100% Cotton Canvas, 320gsm. Denim: 70% Cotton, 30% Polyester, 265gsm



Raspberry Crush	Marine Blue
Magenta	Purple
Hot Pink	Rich Violet
Salsa	Lavender
Fuchsia	Lilac
Pink	Light Blue
Rose	Cornflower
Aubergine	Mid Blue
Burgundy	Sapphire
Red	Blue Denim
Strawberry Red	Indigo Denim
Orange	Navy
Terracotta	Royal
Chestnut	Peacock
Mocha	Teal
Brown	Turquoise
Dark Grey	Cyan
Mushroom	Duck Egg
Latte	Aqua
Khaki	Pistachio
Natural	Apple
Camel	Kelly
Mustard	Emerald
Sunflower	Bottle
Yellow	*White
Lemon	Silver
Lime	Steel
Oasis Green	Grey Denim
Olive	Black Denim
Moss Green	Charcoal
Sage	*Black

COLOUR THAT MAKES AN IMPACT

THE 'COLOURS COLLECTION'

The look we've created here celebrates the natural pairing of green and yellow - a fresh, uplifting combination that feels both vibrant and beautifully balanced. Together, these two colours bring out the best in each other, creating a unified team aesthetic that feels full of energy, warmth and effortless style. By mixing bib and waist aprons and pairing them with complementary tees and shirts, you can build a look that's both cohesive and visually impactful.

Green evokes freshness, growth and a connection to nature, while yellow introduces brightness, optimism and positivity. When used together, they strike the perfect balance - calming yet energising - helping to create an atmosphere that feels welcoming, lively and memorable for both staff and customers. This colour story can flow seamlessly beyond uniforms into your wider brand world - from interiors and décor to menus and presentation - creating a consistent and immersive experience.

Colour trends don't stand still - and neither should your brand, so choose colourful confident combinations that feel intentional and expressive. With 62 bold, fashion-forward shades in our Colours Collection, you have the freedom to experiment, refine and define your own version of this pairing. Whether you lean into soft, nature-inspired tones or brighter, statement contrasts, the possibilities are endless.

So, go ahead be confident, play with colour and create a uniform that not only looks great, but tells your story, elevates your space and redefines your brand identity.

62 COLOURS

85° Wash Brandable



Decorations are for illustrative purposes only (garments are supplied blank)

'Colours Collection' Bib Apron

PR150 'Colours Collection' Bib Apron

65% Polyester, 35% Cotton, 195gsm. Denim: 70% Cotton, 30% Polyester, 265gsm

Orange	Mushroom	Sage	Aqua
Terracotta	Lilac	Pistachio	Duck Egg Blue
Chestnut	Lavender	Apple	Cyan
Brown	Rich Violet	Kelly	Turquoise
Natural	Purple	Emerald	Steel
Latte	Aubergine	Bottle	Silver
Khaki	Burgundy	Teal	Grey Denim
Mocha	Red	Peacock	Black Denim
Camel	Strawberry Red	Navy	Dark Grey
Sunflower	Salsa	Indigo Denim	Charcoal
Mustard	Hot Pink	Marine Blue	Black*
Yellow	Magenta	Royal	
Lemon	Raspberry Crush	Mid Blue	
Lime	Fuchsia	Sapphire	
Oasis Green	Rose	Cornflower	
Moss Green	Pink	Blue Denim	
Olive	White*	Light Blue	



* Black and White available in extra large

'Colours Collection' Bib Pocket Apron

PR154 'Colours Collection' Pocket Bib Apron

65% Polyester, 35% Cotton, 195gsm. Denims: 70% Cotton, 30% Polyester, 265gsm

Indigo Denim	Brown	Aubergine
Navy	Olive	Burgundy
Teal	Moss Green	Red
Bottle	Oasis Green	Strawberry Red
Emerald	Lime	Hot Pink
Apple	Lemon	Fuchsia
Aqua	Sunflower	Rose
Light Blue	Terracotta	Pink
Duck Egg	Orange	Lilac
Turquoise	Chestnut	Silver
Blue Denim	Camel	Steel
Sapphire	Mocha	Dark Grey
Mid Blue	Sage	Charcoal
Marine Blue	Khaki	Grey Denim
Royal	Latte	Black Denim
Purple	Natural	Black
Rich Violet	White	



'Colours Collection' Pocket Waist Aprons

PR155 'Colours Collection' 3 Pocket Waist Apron

65% Polyester, 35% Cotton, 195gsm. Denims: 70% Cotton, 30% Polyester, 265gsm

PR158 'Colours Collection' Bar Apron with Pocket

65% Polyester, 35% Cotton, 195gsm

White	Natural	Aqua
Silver	Khaki	Emerald
*Grey Denim	Sage	Bottle
Dark Grey	Lime	Olive
*Charcoal	Sunflower	Brown
Black	Orange	
*Black Denim	Red	
*Indigo Denim	Burgundy	
Navy	Hot Pink	
Royal	Fuchsia	
Turquoise	Pink	
*Blue Denim	Purple	



* PR158 not available in these colours

'Colours Collection' Mid-Length Aprons

PR141 'Colours Collection' Mid-Length Pocket Apron

65% Recycled Polyester, 35% Recycled Cotton, 195gsm. Denims: 70% Cotton, 30% Polyester, 265gsm

Sage	Dark Grey	Black
Navy	Indigo Denim	Black Denim



PR151 'Colours Collection' Mid-Length Apron

65% Polyester, 35% Cotton, 195gsm

Olive	Rich Violet	Black
Oasis Green	Purple	Dark Grey
Lime	Marine Blue	Steel
Sunflower	Turquoise	Aubergine
Terracotta	Sapphire	Burgundy
Orange	Royal	Red
Mocha	Navy	Strawberry Red
Chestnut	Teal	Hot Pink
Brown	Bottle	Fuchsia
Sage	Emerald	Pink
Khaki	Apple	White
Natural	Aqua	Silver



SWAP & POP

Customise Your Apron with 'Swap & Pop'

PR190 'Swap & Pop' Apron Body

65% Recycled Polyester, 35% Cotton, 195gsm

PR191 'Swap & Pop' Apron Straps

65% Recycled Polyester, 35% Cotton, 195gsm

Brandable 60° Wash



200 COLOUR Combinations



- White
- Pink
- Hot Pink
- Burgundy
- Red
- Orange
- Mustard
- Lime
- Emerald
- Bottle
- Olive
- Brown
- Khaki
- Sage
- Turquoise
- Royal
- Navy
- Purple
- Dark Grey
- Black

Decorations are for illustrative purposes only (garments are supplied blank)



'Long-John' Roll-Sleeve Tee

PR218 Men's 'Long-John' Roll-Sleeve Tee

82% Polyester, 14% Viscose, 4% Elastane, 190gsm
XS/30" - 3XL/54"

PR318 Women's 'Long-John' Roll-Sleeve Tee

82% Polyester, 14% Viscose, 4% Elastane, 190gsm
XS/8 - 2XL/18



40° Wash Modern Fit Easy Care Brandable

'Comis' Cotton-Rich Tee

PR219 Men's 'Comis' Cotton-Rich Tee

60% Cotton, 40% Recycled Polyester, 160gsm. Grey Marl: 90% Cotton, 10% Viscose, 160gsm
XS/30" - 3XL/54"

PR319 Women's 'Comis' Cotton-Rich Tee

60% Cotton, 40% Recycled Polyester, 160gsm. Grey Marl: 90% Cotton, 10% Viscose, 160gsm
XS/8 - 2XL/18



60° Wash Cotton Rich Brandable

† Grey Marl does not contain recycled polyester



TEES

UTILITY 2.0

'Utility 2.0' Oversized T-Shirt

PRO20 'Utility 2.0' Oversized T-Shirt

100% BCI™ Cotton, 220gsm
XS/30" - 4XL/58"

Classic, versatile T-shirts - built to last with a fadeless finish.

60° Wash Brandable



STAY FINISH

LONG LASTING COLOUR

PRO20



Stay Black

Stay Navy

Stay Khaki

Stay Black/White Stripe

Stay Navy/White Stripe

White

'Recyclight' Shirt



- Brandable
- Modern Fit
- Easy Care
- 40° Wash

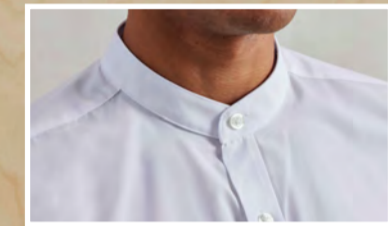


PR203 Men's 'Recyclight' Poplin Shirt

65% Recycled Polyester, 35% Cotton, 115gsm
S/34" - 5XL/62"

PR303 Women's 'Recyclight' Poplin Shirt

65% Recycled Polyester, 35% Cotton, 115gsm
XS/8 - 4XL/22



'Grandad' Shirt

PR258 Men's Banded Collar 'Grandad' Shirt

65% Polyester, 35% Cotton, 115gsm
XS/30" - 3XL/54

PR358 Women's Banded Collar 'Grandad' Shirt

65% Polyester, 35% Cotton, 115gsm
XS/8 - 2XL/18

- Brandable
- 40° Wash
- Modern Fit



Jean Stitch Denim Shirt



- 100% Cotton
- Brandable
- 40° Wash
- Modern Fit



PR222 Men's Jean Stitch Denim Shirt

100% Cotton Ring Spun Denim, 155gsm
XS/30" - 3XL/54"

PR322 Women's Jean Stitch Denim Shirt

100% Cotton Ring Spun Denim, 155gsm
XS/8 - 3XL/20



'Mulligan' Check Shirt

PR250 Men's 'Mulligan' Check Long Sleeve Shirt

100% Cotton Yarn Dyed Poplin, 115gsm
S/34" - 3XL/54"

PR350 Women's 'Mulligan' Check Long Sleeve Shirt

100% Cotton Yarn Dyed Poplin, 115gsm
XS/8 - 2XL/18

- Easy Care
- Brandable
- 40° Wash
- Modern Fit



LONG LASTING COLOUR

SHIRTS



UTILITY 2.0

'Utility 2.0' Service Shirt

PRO21 'Utility 2.0' Service Shirt

58% Cotton, 39% Recycled Polyester, 3% Elastane, 185gsm
XS/30" - 4XL/58"

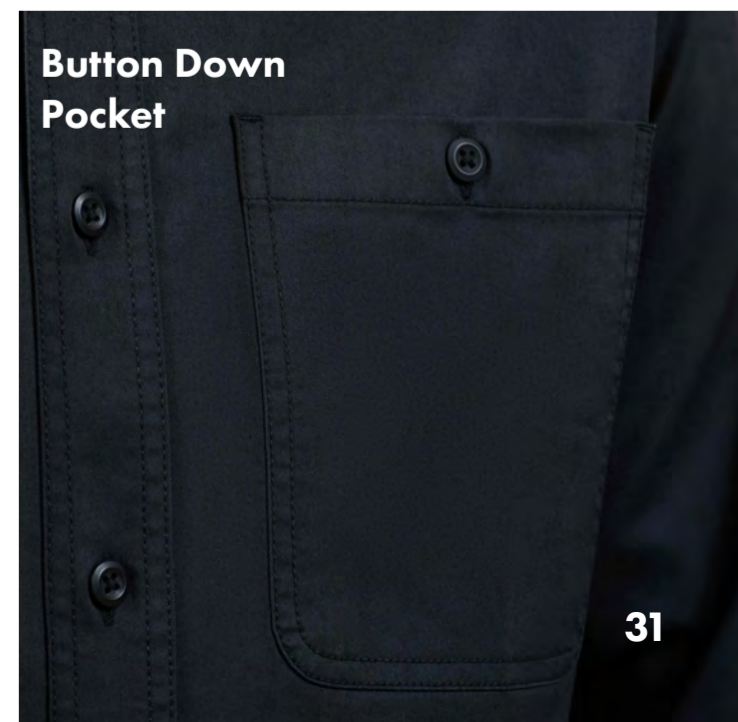


Where lasting colour meets lasting quality.

- 85° Wash
- Brandable



Decorations are for illustrative purposes only (garments are supplied blank)



Button Down Pocket

Brandable

Tailored Fit

Easy Care

40° Wash



PR302

PR200

POPLIN SHIRTS



Long Sleeve

PR200 Men's Long Sleeve Poplin Shirt

65% Polyester, 35% Cotton, 105gsm
14.5" / 37cm - 23" / 56cm*

PR300 Women's Long Sleeve Poplin Shirt

65% Polyester, 35% Cotton, 105gsm
White: 115gsm
2XS/6 - 8XL/30*



Short Sleeve

PR202 Men's Short Sleeve Poplin Shirt

65% Polyester, 35% Cotton, 105gsm
14.5" / 37cm - 23" / 56cm*

PR302 Women's Short Sleeve Poplin Shirt

65% Polyester, 35% Cotton, 105gsm
White: 115gsm
2XS/6 - 8XL/30*

*Men's sizes 20"/50cm, 21"/52cm, 22"/54cm and 23"/56cm only available in selected colours
*Women's sizes 28/7XL and 30/8XL only available in selected colours

OUTERWEAR



PR803

PR804

'Artisan' Fleece Gilet

PR803 Men's 'Artisan' Fleece Gilet

100% Polyester, 260gsm
S/34" - 3XL/54"

PR804 Women's 'Artisan' Fleece Gilet

100% Polyester, 260gsm
XS/8 - 3XL/20



Brandable

40° Wash

'Artisan' Fleece Jacket

PR823 Men's 'Artisan' Fleece Jacket

100% Polyester, 260gsm
S/34" - 3XL/54"

PR824 Women's 'Artisan' Fleece Jacket

100% Polyester, 260gsm
XS/8 - 3XL/20



Brandable

40° Wash



PR824

PR823

UTILITY 2.0

FOR EVERY INDUSTRY

**STAY
FINISH**

**LONG
LASTING
COLOUR**

PRO22



Decorations are for illustrative purposes only (garments are supplied blank)

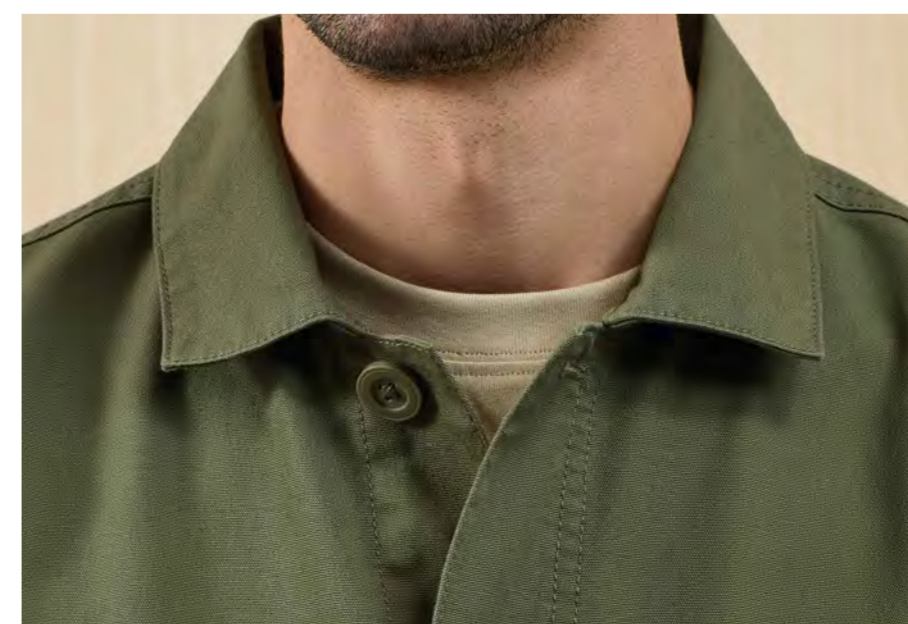


'Utility 2.0' Chore Jacket

PRO22 'Utility 2.0' Chore Jacket
60% Cotton, 40% Recycled Polyester, 240gsm
XS/30" - 4XL/58"

**Blending modern,
street-inspired style
with workwear roots.**

85° Wash
Brandable





TROUSERS

Performance 'Chino' Jeans



PR560 Men's Performance 'Chino' Jeans

63% Polyester, 35% Cotton, 2% Elastane, 260gsm
XS/30" - 4XL/44"
Regular leg 31"/79cm, Long leg 34"/86cm

PR570 Women's Performance 'Chino' Jeans

63% Polyester, 35% Cotton, 2% Elastane, 260gsm
XS/8 - 5XL/24
Regular leg 31"/79cm, Long leg 34"/86cm



Performance 'Chino' Shorts



PR562 Men's Performance 'Chino' Shorts

63% Polyester, 35% Cotton, 2% Elastane, 260gsm
XS/30" - 4XL/44"

PR572 Women's Performance 'Chino' Shorts

63% Polyester, 35% Cotton, 2% Elastane, 260gsm
XS/8 - 5XL/24



UTILITY

2.0

Workready Jeans

PR567 Men's Workready Straight Leg Jeans

*Stay Black: 98% Cotton, 2% Elastane, 375gsm.
Always Indigo: 80% Cotton, 19% Recycled Polyester, 1% Elastane, 345gsm
XS/28" - 4XL/44"

PR577 Women's Workready Straight Leg Jeans

*Stay Black: 98% Cotton, 2% Elastane, 335gsm.
Always Indigo: 79% Cotton, 19% Recycled Polyester, 2% Elastane, 335gsm
2XS/6 - 5XL/24



PR567

PR577

PR904



PR557

'Recyclight' Short Sleeve Shirt & Cargo Trousers

PR904 Chef's 'Recyclight' Short Sleeve Shirt

65% Recycled Polyester, 35% Cotton, 170gsm

XS/30" - 3XL/50"

PR557 Chef's 'Recyclight' Cargo Trousers

65% Recycled Polyester, 35% Cotton, 170gsm

S/32-24" - 3XL/44-46"

60° Wash

Brandable



CHEFSWEAR

'Essential' Coolchecker Chef's Shirt

PR646 Short Sleeve 'Essential' Chef's Shirt

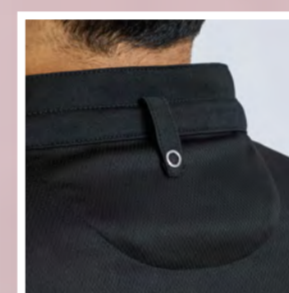
PR647 Long Sleeve 'Essential' Chef's Shirt

100% Recycled Polyester, 155gsm

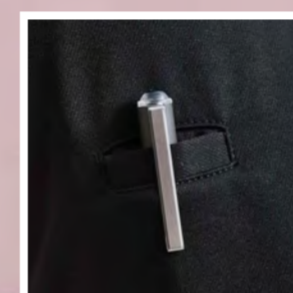
XS/31" - 4XL/48"

60° Wash

Brandable



Loop to secure apron



Pen pocket



PR646

PR647

COOL[®]
CHECKER



PR906

Zipped Chef's Jackets

PR906 Chef's Zip-Close Short Sleeve

White: 65% Polyester, 35% Cotton, 170gsm.

Denim: 60% Cotton, 40% Polyester, 230gsm

XS/30" - 2XL/50"

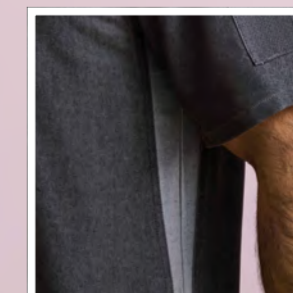
60° Wash

Cotton Rich

Brandable



Zip through fastening



Contrast underarm



PR903

PR902

COOL
CHECKER

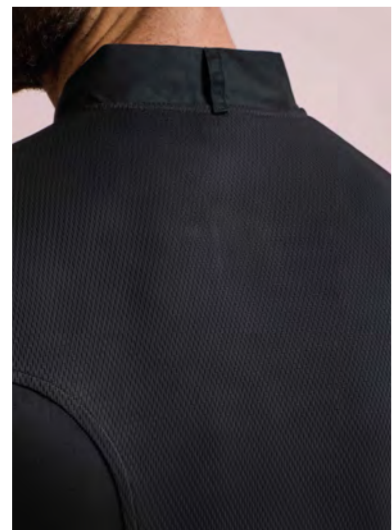
Decorations are for illustrative purposes only (garments are supplied blank)

Coolchecker® Chef's Jacket

PR902 Coolchecker® Short Sleeve Jacket
PR903 Coolchecker® Long Sleeve Jacket
65% Polyester, 35% Cotton, 170gsm
XS/30" - 4XL/58"



60° Wash
Brandable



▪ Double pen pocket

▪ Breathable mesh back panel

Press Stud Fastening Jackets

PR664 Short Sleeve Studded Chef's Jacket

PR665 Long Sleeve Studded Chef's Jacket

65% Polyester, 35% Cotton, 195gsm
XS/30" - 5XL/62"

PR660 Denim Studded Chef's Jacket

60% Cotton, 40% Polyester, 230gsm
XS/30" - 3XL/54"



85° Wash
Brandable



PR660

Cotton Rich
85° Wash
Brandable

Grey Denim

Black Denim



PR665

PR664

Classic Chef's Jacket

PR656 Short Sleeve Chef's Jacket

PR657 Long Sleeve Chef's Jacket

65% Polyester, 35% Cotton, 195gsm

XS/30" - 5XL/62"



STANDARD 100
11-55731
Shirley

85° Wash

Brandable



Chef's Trousers

PR554 Chef's 'Select' Slim Leg Trousers

65% Polyester, 35% Cotton, 195gsm

XS/28" - 2XL/44"



STANDARD 100
11-55731
Shirley

85° Wash

Brandable



Two cargo pockets

PR555 'Essential' Chef's Cargo Pocket Trousers

65% Polyester, 35% Cotton, 195gsm

XS/28" - 5XL/46"



STANDARD 100
11-55731
Shirley

60° Wash

Brandable



'Essential' Chef's Jacket

PR900 'Essential' Short Sleeve Chef's Jacket

PR901 'Essential' Long Sleeve Chef's Jacket

65% Polyester, 35% Cotton, 170gsm

XS/30" - 5XL/62"



STANDARD 100
11-55731
Shirley

85° Wash

Brandable



CHEF'S STYLE



Decorations are for illustrative purposes only (garments are supplied blank)

OUTFIT 1: PR904 'Recyclight' Chef's Jacket, page 38 with PR023 'Ripstop' Apron, page 9.

OUTFIT 2: PR647 'Essential' Coolchecker Chef's Shirt, page 39 with PR182 'Clip & Clasp' Bib Apron, page 19.

OUTFIT 3: PR664 Studded Chef's Jacket, page 41 with PR129 Cross Back 'Barista' Apron, page 23.

OUTFIT 4: PR656 Classic Chef's Jacket with PR144 'Annex' Oxford Bib Apron, page 20.

OUTFIT 5: PR901 'Essential' Chef's Jacket, page 42 with PR181 'Artisan's Choice Bib Apron, page 18.



PR150



PR020



PR155



PR022



PR647



PR906



PR191

PR190



PR191



PR577



PR567