

THE COLLECTION

DISCOVER THE LATEST WORKPLACE FASHIONS



BUSINESSWEAR

HOSPITALITYWEAR

CHEFSWEAR

BEAUTY & HEALTHCARE



CONTENTS

What's New	4 - 5
Shirts & Tees	6 - 37
Waistcoats	38 - 39
Ties & Scarves	40 - 46
Trousers & Chinos	47 - 49
Knitwear	50 - 55
Polo Shirts	56 - 63
HeiQ Viroblock Collection	64 - 69
Face Masks & Coverings	70 - 73
Aprons & Tabards	74 - 111
Eco-Friendly Options	92 - 97
Chefswear	112 - 129
Beauty & Spa	130 - 137
Salon & Healthcare	138 - 143

People, Production & The Planet

We are proud of our collection and the people who make it for us. We care about the environment that we all live and work in.

To protect what is important to us, we require every supplier and factory to meet a set of internationally recognised directives that awards them with a Certification of Compliance.

Learn more on page 144

PRODUCT RESILIENCE MEETS PRODUCT INNOVATION

As our working environments adapt and evolve, we continue to be at the forefront of product development and innovation with a collection of uniforms that meet the ever-changing demands of the nation's workforce.

Our ability to be reactive has seen us develop and bring to market a collection of face masks and coverings that are now a familiar part of our everyday working lives. These coverings are designed to work effortlessly with our clothing collection, so you can colour coordinate with confidence.

With the aim of providing a specialist hygienic collection of workwear to our customers, we are pleased to launch a number of products that are treated with an antimicrobial textile technology called HeiQ Viroblock that makes the fabric resistant to bacteria and microbes.

In our efforts to be live, work and manufacture in a more sustainable way, we have launched a line of hospitalitywear that reflects this ethos.



This range will be welcomed by businesses who want to promote a message of sustainability through their working practices.

Key styles that have been part of our collection for many years have recently demonstrated how versatile they can be. It is worth taking a fresh look at our collection of aprons, tabards and tunics and consider how they play a vital role in the cleaning, hygiene and housekeeping sectors. Antimicrobial polo shirts that offer high wash performance and superior breathability prove to be a great all-round uniform solution for those working in labour intensive roles.

Our healthcare tunics continue to play a big part in identifying key workers in the community and we've extended our range of waterproof and bleach resistant coverings that will prove popular with those who need adequate protection against liquid spillages.

Our corporate collection of shirts reminds us that there is never an excuse for poor dressing in the workplace and we would like to finish on a 'green' note about our best-selling Poplin Shirts. We have completed the removal all unnecessary packaging, including plastic clips, collar bands, cardboard inserts and swing tickets - and based on the amount we manufacture in one year, this equates to an incredible twenty seven tonnes of packaging saved on this product alone.



SHIRTS

A SMART APPROACH

Whether you're meeting customers face to face or striking up an online chat, it's as important as ever to maintain a smart, professional approach with your work attire. Our shirts are incredibly versatile and can be styled to fit the occasion with a huge choice of colours and sizes available throughout the range.



THE ORIGINAL POPLIN SHIRT

The Everyday Shirt For Everybody

Long Sleeve Poplin Shirt ■ 65% Polyester, 35% Cotton, 105gsm, 27 colours

PR200 Men's: Formal collar styling, Left chest open Mitred pocket, Double button fastening on the cuff ■ Sizes: **14.5"/37cm – 23"/56cm***

PR300 Women's: Soft collar styling, Rounded bottom hem, Styled with bust and back darts ■ Sizes: **6/2XS – 30/8XL***

Short Sleeve Poplin Shirt ■ 65% Polyester, 35% Cotton, 105gsm, 27 colours

PR202 Men's: Formal collar styling, Left chest open Mitred pocket, Self coloured buttons ■ Sizes: **14.5"/37cm – 23"/56cm***

PR302 Women's: Soft collar styling, Rounded bottom hem, Styled with bust and back darts ■ Sizes: **6/2XS – 30/8XL***

* Men's sizes 20"/50cm, 21"/52cm, 22"/54cm and 23"/56cm only available in selected colours

* Women's sizes 28/7XL and 30/8XL only available in selected colours



TAILORED
FIT

EASY
CARE



27

Colours



3 COLOURS
**SUPREME
POPLIN**



PR209 & PR309
Available in long sleeve and short sleeved versions.
See page 14

7 COLOURS
**THREE
QUARTER
SLEEVE**



PR305
See page 11

POPLIN COLLECTION



7 COLOURS
**SLIM-FIT
POPLIN**

PR204
Men's Long Sleeve shirt, page 11



27 COLOURS
**CLASSIC
POPLIN**

PR200, PR300, PR202 & PR302
See pages 8 – 9



4 COLOURS
**STRETCH
FIT**



PR244, PR344, PR246 & PR346
See pages 12 – 13



PR305

PR204

PR305 Women's Three-Quarter Sleeve Blouse ■ Soft collar styling, Three-quarter sleeves, Styled with bust and back darts ■ 65% Polyester, 35% Cotton, 105gsm/115gsm White ■ Sizes: 6/2XS - 26/6XL (Size 6/2XS in Black & White only) ■ 7 colours



**TAILORED
FIT**

PR204 Men's Long Sleeve Slim-Fit Poplin Shirt ■ Formal collar styling, Double button fastening on the cuff, Fitted style ■ 65% Polyester, 35% Cotton, 105gsm ■ Sizes: 14.5"/37cm - 17.5"/44.5cm ■ 7 colours



**SLIM
FIT**



PR346

PR246

STRETCH-FIT POPLIN

Stretch-Fit Cotton Poplin Short Sleeve Shirt ■ 97% Cotton, 3% Elastane, 115gsm, 4 colours

PR246 Men's: Seamless placket, Cut-away collar, Soft and stretchy fabric
■ Sizes: **XS/30"** – **4XL/58"**

PR346 Women's: Seamless placket, Styled with bust and back darts, Soft and stretchy fabric
■ Sizes: **XS/8** – **3XL/20**



SILVER

WHITE

PALE BLUE

BLACK

Stretch-Fit Cotton Poplin Long Sleeve Shirt ■ 97% Cotton, 3% Elastane, 115gsm, 4 colours

PR244 Men's: Seamless placket, Cut-away collar, Two button adjustable cuff ■ Sizes: **XS/30"** – **4XL/58"**

PR344 Women's: Seamless placket, Styled with bust and back darts, Two button adjustable cuff ■ Sizes: **XS/8** – **3XL/20**

MODERN
FIT



STRETCH



PR244

PR344

40°

SUPREME POPLIN

For increased wear and durability

Short Sleeve Supreme Poplin Shirt ■ 65% Polyester, 35% Cotton, 125gsm, 3 colours

PR209 Men's: Offering a heavier fabric construction, Formal collar styling, Two button fastening on the collar stand ■ Sizes: **14.5"** / 37cm – **19"** / 48cm

PR309 Women's: Offering a heavier fabric construction, Styled with bust and back darts, Two button fastening on the collar stand ■ Sizes: **8/XS** – **26/6XL**

Long Sleeve Supreme Poplin Shirt ■ 65% Polyester, 35% Cotton, 125gsm, 3 colours

PR207 Men's: Offering a heavier fabric construction, Formal collar styling, Two button fastening on the cuff ■ Sizes: **14.5"** / 37cm – **19"** / 48cm

PR307 Women's: Offering a heavier fabric construction, Styled with bust and back darts, Two button fastening on the cuff ■ Sizes: **8/XS** – **26/6XL**

MODERN
FIT

EASY
CARE



SUPREME
POPLIN



40°



SECURITY SHIRTS

Long Sleeve Pilot Shirt ■ Formal collar styling, Two Mitred button down chest pockets, Tabs for application of Epaulettes on the shoulders ■ 65% Polyester, 35% Cotton.

PR210 Men's: 105gsm, 3 colours ■ Sizes: 14.5"/37cm – 19"/48cm

PR310 Women's: 115gsm, *1 colour ■ Sizes: 8/XS – 26/6XL

CLASSIC FIT

Short Sleeve Pilot Shirt ■ Formal collar styling, Two Mitred button down chest pockets, Tabs for application of Epaulettes on the shoulders ■ 65% Polyester, 35% Cotton.

PR212 Men's: 105gsm, 3 colours ■ Sizes: 14.5"/37cm – 19"/48cm

PR312 Women's: 115gsm, *2 colours ■ Sizes: 8/XS – 26/6XL



SECURITY ACCESSORIES

PR700 Work Tie ■ Plain colour styling, Blade width 3.25"/8cm ■ 100% Polyester ■ Wipe clean only ■ 6 colours



PR710 Clip-on Work Tie ■ Clip-on version of PR700, Steel clip attachment, Blade width 3.25"/8cm ■ 100% Polyester ■ Wipe clean only ■ 6 colours



PR715 Epaulettes ■ Adjustable tear release fastening, Embroidery area 9cm x 5cm, Fabric match PR700, PR710 & PR711 ■ 100% Polyester ■ Wipe clean only ■ 2 colours



PR711 Women's Clip-on Cravat ■ Steel clip attachment, Complements PR710 Clip-on tie ■ 100% Polyester ■ Wipe clean only ■ 1 colour





PR252

PR352

'MAXTON' CHECK LONG SLEEVE SHIRT

'Maxton' Check Long Sleeve Shirt ■ Button-down collar on the underside, Soft collar styling, Single button cuff ■ 65% Polyester, 35% Cotton Yarn Dyed Poplin, 110gsm, 5 colours.

PR252 Men's sizes: S/34" – 3XL/54" ■ **PR352** Women's sizes: XS/8 – 2XL/18



MODERN
FIT

EASY
CARE



LIGHT BLUE/WHITE

NAVY/WHITE

SILVER/WHITE

STEEL/BLACK

RED/BLACK



NAVY/WHITE

LIGHT BLUE/WHITE

BLACK/WHITE

RED/WHITE



PR220

PR320

GINGHAM COTTON SHIRTS

Long Sleeve Gingham Shirt ■ 100% Cotton Yarn Dyed Poplin, 115gsm, 4 colours

PR220 Men's: Soft collar styling, Two button adjustable cuff, Modern fit ■ Sizes: **XS/30"** – **3XL/54"**

PR320 Women's: Soft collar styling, Two button adjustable cuff, Styled with bust and back darts ■ Sizes: **XS/8** – **3XL/20**

Short Sleeve Gingham Shirt ■ 100% Cotton Yarn Dyed Poplin, 115gsm, 4 colours

PR221 Men's: Soft collar styling, Curved hem, Modern fit ■ Sizes: **XS/30"** – **3XL/54"**

PR321 Women's: Soft collar styling, Curved hem, Styled with bust and back darts ■ Sizes: **XS/8** – **3XL/20**



MODERN
FIT



PR321

PR221



40°

Long Sleeve Signature Oxford Shirt ■ 70% Cotton, 30% Polyester, 135gsm, 4 colours

PR234 Men's: Button-down collar, Left chest open mitred pocket, Double button cuff ■ Sizes: **14.5"** / 37cm – **19"** / 48cm

PR334 Women's: Soft collar styling, Rounded bottom hem, Double button cuff ■ Sizes: **8/XS** – **26/6XL**

Signature
OXFORD



Short Sleeve Signature Oxford Shirt ■ 70% Cotton, 30% Polyester, 135gsm, 4 colours

PR236 Men's: Button-down collar, Left chest open mitred pocket, Rounded bottom hem ■ Sizes: **14.5"** / 37cm – **19"** / 48cm

PR336 Women's: Soft collar styling, Rounded bottom hem, Bust and back darts ■ Sizes: **8/XS** – **26/6XL**

**MODERN
FIT**



COTTON SLUB CHAMBRAY SHIRTS

Cotton Slub Chambray Long Sleeve Shirt ■ Slub yarn for texture and personality in the fabric, Soft collar styling, Two button adjustable cuff ■ 100% Cotton, 115gsm, 3 colours.

PR245 Men's sizes: S/34" – 3XL/54" ■ **PR345** Women's sizes: XS/8 – 2XL/18



OXFORD STRIPE

Cotton Rich Oxford Stripes Shirt ■ 60% Cotton, 40% Polyester, 135gsm, 5 colours

PR238 Men's: Classic button-down collar, Contrast coloured inner neckband and cuff, Two button adjustable cuff ■ Sizes S/34" – 3XL/54"

PR338 Women's: Button-down collar on the underside, Contrast coloured inner neckband and cuff, Two button adjustable cuff ■ Sizes: XS/8 – 2XL/18





COTTON COMFORT –
SUSTAINABLY SOURCED

NEW

CHAMBRAY SHIRT ORGANIC & FAIRTRADE CERTIFIED

Chambray Shirt - Organic & Fairtrade Certified ■ Two chest pockets with combined pen pocket to the left ■ Double button cuff for adjustment with a single button sleeve guard ■ Button-down collar on the underside ■ 100% Organic Cotton, Fairtrade Certified, 160gsm, 2 colours
PR247 Men's sizes: S/34" – 3XL/54" ■ **PR347** Women's sizes: XS/8 – 3XL/20



MODERN
FIT





DENIM-PINDOT SHIRTS

Denim-Pindot Long Sleeve Shirt ■ Contrast coloured inner neckband and cuff, Two button adjustable cuff, Modern fit ■ Indigo: 100% Cotton Ring Spun Denim, 155gsm. Dots: 100% Cotton Poplin, 115gsm, 2 colours.

PR259 Men's sizes: S/34" – 3XL/54" ■ **PR359** Women's sizes: XS/8 – 2XL/18

MODERN
FIT

100%
COTTON

40°

JEAN STITCH DENIM SHIRTS

MODERN
FIT

100%
COTTON

Jean Stitch Denim Shirt ■ 100% Cotton Ring Spun Denim, 155gsm, 2 colours

PR222 Men's: Contrast stitch details, Left chest button-down chest pocket, Buttoned cuff and sleeve guard ■ Sizes: **XS/30" – 3XL/54"**

PR322 Women's: Contrast stitch details, Two button-down chest pockets, Buttoned cuff and sleeve guard ■ Sizes: **XS/8 – 3XL/20**



■ Button down chest pocket ■ Contrast stitching on Indigo shirt



BLACK DENIM



INDIGO DENIM

'MULLIGAN' CHECK SHIRTS

PREMIER[®]
UNIFORMS THAT WORK FOR YOU

'Mulligan' Check Long Sleeve Shirt ■ Roll-sleeve option with button fastening on the upper arm, Narrow soft collar styling, Curved hem ■ 100% Cotton Yarn Dyed Poplin, 115gsm, 4 colours.

PR250 Men's sizes: S/34" – 3XL/54" ■ **PR350 Women's sizes:** XS/8 – 2XL/18



■ 100% Cotton Yarn Dyed Poplin fabric

■ Roll-sleeve option with button and tab fastening



RED/NAVY

CAMEL/NAVY

STEEL/BLACK

WHITE/NAVY



'SIDEHILL' CHECK SHIRTS



'Sidehill' Check Long Sleeve Shirt ▪ Roll-sleeve option with button fastening on the upper arm, Narrow soft collar styling, Curved hem ▪ 100% Cotton Yarn Dyed Poplin, 115gsm, 1 colour.
PR256 Men's sizes: S/34" – 3XL/54" ▪ **PR356** Women's sizes: XS/8 – 2XL/18



▪ Roll-sleeve option with button and tab fastening



'GINMILL' CHECK SHIRTS



'Ginmill' Check Long Sleeve Cotton Shirt ▪ Roll-sleeve option with button fastening on the upper arm, Narrow soft collar styling, Curved hem ▪ 100% Cotton Yarn Dyed Poplin, 115gsm, 1 colour.
PR254 Men's sizes: S/34" – 3XL/54" ▪ **PR354** Women's sizes: XS/8 – 2XL/18



▪ Soft collar styling



ROLL-SLEEVE BAR SHIRT

Roll-Sleeve Poplin Shirt ■ Button fastening on upper arm, Left chest vented pocket, Soft collar styling ■ 65% Polyester, 35% Cotton, 105gsm, 1 colour.

PR206 Men's sizes: S/34" – 2XL/50" ■ **PR306** Women's sizes: XS/8 – 2XL/18

**TAILORED
FIT**



'CROSS-DYE' BAR SHIRT

Roll-Sleeve 'Cross-Dye' Poplin Shirt

■ 65% Polyester, 35% Cotton, 105gsm, 2 colours

PR217 Men's: Soft collar styling, Cross-dye textured fabric appearance, Roll-up sleeve with button fastening on the upper arm ■ Sizes: **XS/30"** – **3XL/54"**

PR317 Women's: Soft collar styling, Cross-dye textured fabric appearance, Bust and back darts ■ Sizes: **XS/8** – **3XL/20**



■ Roll-up sleeve with button fastening



■ Left chest vented pocket

■ Roll-up sleeve





'GRANDAD' SHIRT



PR258 Banded Collar 'Grandad' Long Sleeve Shirt ■ Classic banded 'Grandad' collar with top button fastening, Double button cuff, Unisex styling ■ 65% Polyester, 35% Cotton, 115gsm ■ Sizes: **XS/30" – 3XL/54"** ■ Colour: White



'LONG-JOHN' ROLL-SLEEVE TEE



'Long-John' Roll-Sleeve Tee ■ Roll-sleeve with button and tab fastening on the upper arm, Round neck with three button placket, Ribbed bound neck and cuffs ■ 82% Polyester, 14% Viscose, 4% Elastane, 190gsm, 5 colours.

PR218 Men's sizes: XS/30" – 3XL/54" ■ **PR318 Women's sizes: XS/8 – 2XL/18**

WAISTCOATS

READY FOR SERVICE

Hospitality Waistcoat ■ 65% Polyester, 35% Cotton, 195gsm, Colour: Black

PR620 Men's: Self-fabric back, Two functional watch pockets, Five button fastening ■ Sizes: **S/36" – 2XL/52"**

PR621 Women's: Self-fabric back, Two functional watch pockets, Four button fastening ■ Sizes: **S/10 – 2XL/18**

Lined Polyester Waistcoat ■ 100% Polyester, 185gsm, Colour: Black

PR622 Men's: Satin back with adjuster, Two functional watch pockets, Five button fastening ■ Sizes: **2XS/30" – 2XL/52"**

PR623 Women's: Satin back with adjuster, Two functional watch pockets, Four button fastening ■ Sizes: **2XS/6 – 2XL/18**



HERRINGBONE WAISTCOAT

Herringbone Waistcoat ■ Satin lining to the underside and reverse, Lapel collar, Adjusting buckle on the back ■ 50% Wool, 45% Polyester, 5% mixed fibres, 300gsm, 3 colours.

PR625 Men's sizes: **XS/32" – 2XL/52"**

PR626 Women's sizes: **XS/8 – 2XL/18**

■ Brown Check

■ Charcoal

■ Navy



TIES AND SCARVES



PR750 'Colours Collection' Satin Tie ■ Blade width 3.34"/8.5cm, Length 57"/144cm ■ 100% Polyester ■ 40°C wash ■ 40 colours

PR740 'Colours Collection' Chiffon Scarf ■ Lightweight chiffon, Width 6.5"/16.5cm, Length 38.5"/98cm ■ 100% Polyester ■ Handwash ■ 40 colours

PR755 'Colours Collection' Clip-on Satin Tie ■ Clip-on tie, Steel clip attachment, Blade width 3.34"/8.5cm ■ 100% Polyester ■ Handwash ■ 28 colours*



40

Colours

MIX AND MATCH IN COLOUR



PR730 'Colours Originals'
Plain Business Scarf ■ Width
10"/25cm, Length 55"/140cm,
■ 100% Polyester ■ Handwash
■ 18 colours

PR765 'Colours Originals'
Fashion Tie ■ Matt appearance,
Blade width 4"/10cm, Length
57"/144cm ■ 100% Polyester
■ 40°C wash ■ 18 colours

PR785 'Colours Originals' Clip-on
Fashion Tie ■ Clip-on tie, Steel
clip attachment, Blade width
4"/10cm, Length 18"/47cm ■
100% Polyester ■ Handwash ■
18 colours



PR787 Puppy Tooth



PR780 Micro Waffle



PR783 Waffle Stripe



PR786 Club Stripe



PR788 Squares



PR781 Micro Dot



PR780 **PR781** **PR783** **PR786** **PR787** **PR788** Patterned Ties ■ Blade width 3"/7.5cm, Length 57"/144cm ■ 100% Polyester ■ Handwash

TIES AND BOW TIES



PR705 Bow Tie ■ Satin weave
bow tie, Hook and bar fastening
■ 100% Polyester ■ Wipe clean
■ Colour: Black



PR782 Double Stripe



PR784 Sports Stripe



Blade width 3"/7.5cm, Length 57"/144cm ■ 100% Polyester ■ Handwash



PR722 Horizontal Stripe



Blade width 4"/10cm, Length 57"/144cm ■ 100% Polyester ■ 40°C wash



PR766 Candy Stripe



PR795 Silk Tie



Luxurious silk tie, Blade width 4"/10cm,
Length 57"/144cm ■ 100% Silk twill ■
Wipe clean only



SKINNY TIES



PR789 Slim Knitted Tie ■ Blade width 2"/5cm,
Length 58"/147cm ■ 100% Polyester ■ Handwash



PR793 Slim Tie ■ Satin weave, Blade width 2"/5cm,
Length 58"/147cm ■ 100% Polyester ■ Wipe clean only

MULTI-STRIPE SCARVES AND TIES



PR772 Four Stripe Scarf ■ Width 10"/25cm, Length 55"/120cm ■ 100% Polyester ■ Handwash



PR762 Four Stripe Tie ■ Blade width 4"/10cm, Length 57"/144cm ■ 100% Polyester ■ 40°C wash



PR770 Multi-Stripe Scarf ■ Width 10"/25cm, Length 47"/124cm ■ 100% Polyester ■ Handwash



PR760 Multi-Stripe Tie ■ Blade width 4"/10cm, Length 57"/144cm ■ 100% Polyester ■ 40°C wash

TROUSERS FIT FOR BUSINESS



PR520 Men's Business Trousers ■ Single pleated front, YKK zip fly with button, hook and bar fastening, Rear jetted pocket ■ 100% Polyester, 185gsm ■ Sizes: 30"/76cm – 44"/110cm, Regular leg 31"/79 cm, Long leg 34"/86 cm ■ Colour: Black

PR530 Women's Business Trousers ■ Single pleated front, YKK zip fly with button, hook and bar fastening, Boot cut style ■ 100% Polyester, 185gsm ■ Sizes: XS/8 – 5XL/24, Regular leg 31"/79 cm, Long leg 34"/86 cm ■ Colour: Black

PR536 Women's Straight Leg Trousers ■ Trouser with a deep waistband, YKK fastening zip, Cross-over waistband with two button fastening ■ 100% Polyester, 185gsm ■ Sizes: XS/8 – 5XL/24, Regular leg 31"/79 cm *Long leg 34"/86 cm ■ 4 colours



STRAIGHT CUT

PR520



STRAIGHT CUT

PR536



BOOT CUT

PR530



PERFORMANCE 'CHINO' JEANS

Performance 'Chino' Jeans ■ Front and back pockets, Rivet detail, Zip fly with metal button fastening on waistband, Stretch fabric ■ Regular leg 31"/79cm, Long leg 34"/86cm ■ 63% Polyester, 35% Cotton, 2% Elastane, 260gsm, 5 colours.

PR560 Men's sizes: XS/30" – 4XL/44" ■ **PR570** Women's sizes: XS/8 – 5XL/24

STRETCH



CLIP-ON TROUSER BRACES

PR701 Clip-on Trousers Braces ■ Elastic 'Y' back strap braces, Three non-slip clip buckles for attachment, Fully adjustable with lock buckles ■ 60% Polyester, 40% Rubber ■ 5 colours





COTTON RICH KNITWEAR

PR694 Men's V-neck Knitted Sweater

▪ Cotton-rich long sleeve sweater, V-neck styling, Ribbed knit cuffs and hem ▪ 55% Cotton, 45% Acrylic, 12 gauge knit ▪ Sizes: **2XS/28"** – **4XL/58"** ▪ 8 colours

PR697 Women's V-neck Knitted Cardigan

▪ Cotton-rich long sleeve cardigan, Seven button fastening, Ribbed knit cuffs and hem ▪ 55% Cotton, 45% Acrylic, 12 gauge knit ▪ Sizes: **XS/8** – **5XL/24** ▪ 8 colours





PR699

PR698

PR699 Men's Sleeveless Sweater ■ V-neck styling, Ribbed knit arm cuffs, neckline and hem, Cotton Rich ■ 55% Cotton, 45% Acrylic, 12 gauge knit ■ Sizes: **XS/30" – 4XL/58"** ■ 3 colours

PR698 Women's Long-Length Knitted Cardigan ■ V-neck styling, Seven button fastening, Two front patch pockets ■ 55% Cotton, 45% Acrylic, 12 gauge knit ■ Sizes: **XS/8 – 5XL/24** ■ 3 colours

PR695 Men's Quarter-Zip Knitted Sweater ■ Cotton Rich, Quarter zipped, Ribbed knit collar, cuff and hem ■ 55% Cotton, 45% Acrylic, 12 gauge knit ■ Sizes: **XS/30" – 4XL/58"** ■ 3 colours

PR696 Women's V-Neck Knitted Sweater ■ V-neck styling, Fine gauge knit, Cotton Rich, Ribbed knit cuffs and hem ■ 55% Cotton, 45% Acrylic, 12 gauge knit ■ Sizes: **XS/8 – 5XL/24** ■ 3 colours



PR695

PR696



BLACK

NAVY

CHARCOAL

PR692 Men's Crew-Neck Cotton Rich Knitted Sweater ■ Fine knit, Crew-neck styling, Ribbed knit neck, hem and cuffs ■ 55% Cotton, 45% Acrylic, 12 gauge knit ■ Sizes: **2XS/28" – 4XL/58"** ■ 3 colours



'ESSENTIAL' ACRYLICS

**EASY
CARE**

PR400 'Essential' Acrylic Men's V-neck Sweater ■ Ribbed knit neck, hem and cuffs, Contemporary V-neck styling, Fine knit ■ 100% Acrylic, 12 gauge knit ■ Sizes: **XS/30"** – **5XL/62"** ■ 2 colours

PR402 'Essential' Acrylic Women's V-neck Cardigan ■ Ribbed knit neck, hem and cuffs, Contemporary V-neck styling, Fine knit ■ 100% Acrylic, 12 gauge knit ■ Sizes: **XS/8** – **2XL/18** ■ 2 colours



PR400



BLACK



NAVY



PR402



40°



COOLCHECKER® POLO SHIRTS

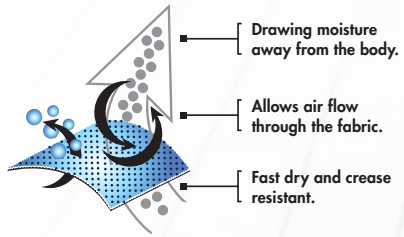
Coolchecker® Pique Polo Shirt ■ Side panels for fitted shape, Moisture management wicking fabric, Three button placket, Ribbed knit collar and cuffs ■ 100% Polyester pique knit, 155gsm, 25 colours

PR615 Men's sizes: S/35" – *5XL/51"

PR616 Women's sizes: XS/8 – 2XL/18

*only available in selected colours

COOLCHECKER® FABRIC TECHNOLOGY



25
Colours



12

Colours

PR619

PR618

CONTRAST POLO SHIRTS

Contrast Tipped Coolchecker® Polo Shirts ■ Contrast trim on collar, placket and sleeves, Side panels for fitted shape, Ribbed knit collar and sleeve, Three button placket
■ 100% Polyester pique knit, 155gsm, 12 colours.

PR618 Men's sizes: S/35" – 4XL/48"

PR619 Women's sizes: XS/8 – 2XL/18

MODERN
FIT

40°



■ Contrast trim on collar ■ Ribbed collar and cuff





PERFORMANCE POLO'S

Coolchecker® Plus Pique Polo - Coolplus® ■ Double pique knit for heavier construction, Coolplus® wicking yarn for breathability, Ribbed knit collar and cuffs, Three button placket, Snag and crease resistant, Silvadur™ technology for antimicrobial properties ■ 100% Coolplus® Polyester Pique, 185gsm, 16 colours.

PR630 Men's sizes: S/35" – *6XL/59"

PR632 Women's sizes: XS/8 – **4XL/22

*and **only available in selected colours



PR632



PURPLE

BURGUNDY

RED*

ORANGE

YELLOW

WHITE*

KELLY

BOTTLE

BLACK**

DARK GREY*

SILVER

NAVY**

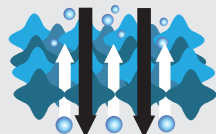
ROYAL*

TURQUOISE

LIGHT BLUE

SAPPHIRE

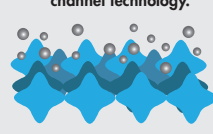
AIR
flows through the fabric.



MOISTURE
drawn away from the skin.



FIBRE
that uses surface dimensional channel technology.



**SILVADUR™
ANTIMICROBIAL**
which releases silver ions that destroy the bacteria that causes odour, material degradation and discolouration.

16

Colours



PR630

POLO SHIRTS

PR610 Studded Polo ■ Three pop stud placket, Extra body length, Durable pique knit ■ 65% Polyester, 35% Cotton, 200gsm ■ Sizes: **S/34" – 3XL/52"** ■ 50°C wash ■ 4 colours

PR617 Long Sleeve Coolchecker Pique ■ Ribbed knit collar and cuffs, Moisture management wicking fabric, Three button placket ■ 100% Polyester Pique, 155gsm ■ Sizes: **XS/33" – 4XL/48"** ■ 40°C wash ■ 2 colours



SNAP BUTTON FASTENING

PR612 Coolchecker® Studded Polo ■ Two pop stud fastening on the placket, Wicking properties, Self-fabric collar ■ 100% Polyester pique, 140gsm ■ Sizes: **XS/33" – 3XL/50"** ■ 7 colours



SPECIAL EDITION ANTIMICROBIAL PRODUCTS

We've been working with a company called HeiQ, on a product development project for a range of special edition workwear. HeiQ has recently launched HeiQ Viroblock, an advanced textile technology that makes fabrics resistant to microbes, germs and bacteria.

With the aim of providing an enhanced hygienic range of workwear, we have adopted HeiQ Viroblock for these special edition products, so they are protected against contamination by microbes, germs and bacteria, with a biocide of Silver Chloride.

**YOUR WORKWEAR WILL
BENEFIT FROM HEIQ VIROBLOCK
ANTIMICROBIAL PROTECTION
FOR UP TO 30 WASHES.**

WASHES UP TO 60°

WHAT IS HEIQ VIROBLOCK?

- An innovative, patent-applied Swiss textile technology that is applied to the fabric during the final stages of production.
- An advanced silver and vesicle technology that inhibits growth and persistence of microorganisms on the fabric surface
- Hypoallergenic, providing a self-sanitizing and germ resistant surface
- Certified as safe and sustainable as all ingredients are bio-based and recycled
- Non-toxic and does not irritate the skin
- EU REACH and OEKOTEX® Certified

For more information on HeiQ Viroblock, visit www.heiq.com/heiq-viroblock-eu

NEW



BIB APRON

POWERED BY, HEIQ VIROBLOCK *

PR996 Bib Apron ■ Powered by HeiQ Viroblock, an antimicrobial textile technology designed to kill microbes, germs and bacteria on the fabric surface, Buckle on the neckband for height adjustment, 86cm long x 72cm wide, Self fabric ties ■ 65% Polyester, 35% Cotton, powered by HeiQ Viroblock, 195gsm ■ One size ■ 5 colours

HEIQ VIROBLOCK

Powered by HeiQ Viroblock, a world-leading innovative Swiss textile technology.

UNISEX SHORT & LONG SLEEVE POLO SHIRT

NEW

POWERED BY, HEIQ VIROBLOCK*

PR995 Unisex Short Sleeve Polo Shirt ▪ Powered by HeiQ Viroblock, an antimicrobial textile technology designed to kill microbes, germs and bacteria on the fabric surface, Ribbed knit collar and sleeve cuff, Two button placket, Extra body length ▪ 65% Polyester, 35% Cotton, powered by HeiQ Viroblock, 200gsm ▪ Sizes: **S/35" – 4XL/53"** ▪ 5 colours

PR997 Unisex Long Sleeve Polo Shirt ▪ Powered by HeiQ Viroblock, an antimicrobial textile technology designed to kill microbes, germs and bacteria on the fabric surface, Ribbed knit collar and sleeve cuff, Two button placket, Extra body length ▪ 65% Polyester, 35% Cotton, powered by HeiQ Viroblock, 200gsm ▪ Sizes: **S/35" – 4XL/53"** ▪ 2 colours**

*Please read disclaimer on page 144



HEIQ VIROBLOCK

Powered by HeiQ Viroblock a world-leading innovative Swiss textile technology.



NEW



PR994

3 LAYER FACE MASK

POWERED BY, HEIQ VIROBLOCK*

PR994 3 Layer Face Mask ■ HeiQ Viroblock antimicrobial textile technology applied to the inner layer; designed to kill microbes, germs and bacteria on the fabric surface, Three layers with a middle filtering layer with pocket for inserting optional PR797 carbon filter, Elasticated ear loops and drawcord to fit securely in place, Teflon™ water repellent outer layer to repel droplets landing on the mask surface ■ Outer layer: 65% Polyester, 35% Cotton, Mid layer: 100% Polyester non-woven, Inner layer: 100% Cotton jersey, powered by HeiQ Viroblock ■ 5 colours



HEIQ VIROBLOCK

Powered by HeiQ Viroblock, a world-leading innovative Swiss textile technology.



NEW



PR998

TOUCH GLOVES

POWERED BY, HEIQ VIROBLOCK*

PR998 Touch Gloves ■ Powered by HeiQ Viroblock, an antimicrobial textile technology designed to kill microbes, germs and bacteria on the fabric surface, Tablet friendly gloves with a conductive imprint on thumb and index finger, Soft and comfortable cotton gloves ■ 95% Cotton, 5% Elastane, powered by HeiQ Viroblock ■ Sizes: S, M, L, XL ■ 1 colour

HEIQ VIROBLOCK

Powered by HeiQ Viroblock, a world-leading innovative Swiss textile technology.



BLACK



FACE MASKS & COVERINGS



Now a familiar part of our every day wear, choose a mask that reflects your company branding with popular shades from our Artisan and 'Colours Collection' ranges.

Using advanced fibre technology, we are proud to present these high performing face covering solutions that are tested and compliant for use within the general population.



PR994



NEW

12

Colours

PR796

3 LAYER FABRIC MASK



FILTERS 98% OF PARTICLES*

PR796 3 Layer Fabric Mask ■ Three layer fabric mask with a middle filtering layer, High air permeability for ease of breathing, Elasticated ear loops with adjustable drawstring cord to fit securely in place, Bendy nose wire to prevent glasses steaming up, Optional pocket for carbon filter (PR797 sold separately), Snug fit over nose and chin, Comes in a resealable retail friendly bag ■ Outer layer: 100% Woven cotton, Mid layer: Filtering non-woven polyester, Inner layer: Soft feel 100% woven cotton ■ 12 colours

*Tested after 20 washes at 60C with particles larger than 3 microns. AFNOR SPEC S76-001 – Eurofins Test CH_PCL_1 Class 1.



REPLACE
EVERY 1 TO 3 DAYS

PR797

Filter can fit into the pocket of the PR796 3 Layer face mask

PM2.5 ACTIVATED CARBON MASK FILTER

PR797 PM2.5 Activated Carbon Mask Filter ■ Optional filter for PR796 for additional defence, Spunbond cloth filters micron-level dust, PM2.5 (Partical matter 2.5 microns), Conforms to standards GB2626-2006, Reduces inhalation of particles such as haze, dust, pollen and motor vehicle exhaust emissions.



PACK OF 10



SNOOD FACE COVERING

PR798 Snood Face Covering ■ Reusable & washable, Allows easy breathing without restriction, Zelan™ R3/Teflon EcoElite™ water repellent finish, Secured by pulling up and stretching over face, doubling the fabric down over the face ■ 100% Polyester Microfibre ■ 3 colours



WASHABLE FACE COVERING

FILTERS 87% OF PARTICLES*

PACK OF 5

PR799 Washable Face Covering ■ Washable and reusable, two layers of single jersey fabric with inner loop option for fit adjustment, Silvadur™ 930 Antimicrobial finish on inner layer, Zelan™ R3 / Teflon EcoElite™ water repellent finish on outer layer ■ L 32 x W 12cm ■ 95% Cotton, 5% Elastane, 160gsm ■ 15 colours

*AFNOR SPEC S76-001 – Eurofins Test CH_PCL_2 Class 1. Please read disclaimer on page 144.



NEW

15

Colours



APRONS

THAT DO THE JOB

Proving to be one of the most versatile items of workwear we do, our Aprons provide essential cover for staff working across many different industries. Whether it's at the front-of-house with trendy artisan inspired styles; in the salon with waterproof choices or on the cleaning frontline with durable styles from the 'Colours Collection,' our Aprons are designed to perform aesthetically and practically.



JEAN STITCH DENIM APRONS

PR126 Jeans Stitch Denim Bib Apron ■ Four 'kangaroo' style pockets with rivet detail, Adjustable buckle on neck band, Width 72cm, length 86cm ■ 70% Cotton, 30% Polyester, 265gsm ■ 2 colours



■ Buckle on neckband ■ Contrast stitching on Indigo Denim



PR125 Jeans Stitch Denim Waist Apron ■ Four 'kangaroo' style pockets with rivet detail, Contrast stitch detail, Length 39.5cm ■ 70% Cotton, 30% Polyester, 265gsm ■ 2 colours





CONTRAST DENIM

PR127 'Domain' Contrast Denim Bib Apron ▪ Neckband with buckle fastening for height adjustment, Centre pocket with contrast trim, including pen compartment, Metal eyelets secure 100cm contrast fabric ties ▪ 70% Cotton, 30% Polyester, 265gsm ▪ 2 colours

PR128 'Domain' Contrast Denim Waist Apron ▪ Mid-length waist Apron measuring 50cm long by 70cm wide, Centre pocket with contrast trim, including pen compartment, Metal eyelets secure 100cm contrast fabric ties ▪ 70% Cotton, 30% Polyester, 265gsm ▪ 2 colours



- Contrast pocket with rivet detail
- Adjustable buckle



WAXED-LOOK COTTON APRONS

PR134 'District' Waxed-Look Bib Apron ■ Durable waxed look finish, Oversized jean style pocket with stitch and rivet detail, Contrast colour ties secured in place with metal eyelets, Fabric features including, patch pocket and cloth holder ■ 100% Cotton Denim with Acrylic 'Waxed Look' Coating, 350gsm ■ 2 colours

PR135 'Division' Waxed-Look Waist Apron ■ Durable waxed look finish giving a water repellent surface, Contrast fabric features for function and decoration, Oversized jean style pocket with stitch rivet detail, Contrast colour ties secured in place with metal eyelets ■ 100% Cotton Denim with Acrylic 'Waxed Look' coating, 350gsm ■ 4 colours

PR136 'Division' Waxed-Look Bib Apron with Faux Leather ■ Durable waxed look finish giving a water repellent surface, Contrast fabric features for function and decoration, Faux leather ties and neckband with adjustable buckle, Tinted denim effect created by contrast coloured yarns ■ 100% Cotton Denim with Acrylic 'Waxed Look' coating, 350gsm ■ 4 colours





'METRO' HIP APRON

PR138 'Metro' Utility Hip Apron ■ Tablet-friendly jeans style riveted pocket, Zip-fastening pocket, Adjustable self-fabric waistband with carabiner fastener ■ 100% Cotton Canvas, 320gsm. Denim: 70% Cotton, 30% Polyester, 265gsm ■ 4 colours



**FAUX
LEATHER**

PR139

BLACK

NAVY

BROWN

TAN

FAUX LEATHER APRON



PR139 Faux Leather Bib Apron ■ Buckle fastening neckband, Durable faux leather, Large open patch pocket, Contrast stitching on Navy ■ Outer 100% Polyurethane, Inner 85% Polyester, 8% Viscose, 7% Cotton, 360gsm ■ 4 colours



'ANNEX' OXFORD BIB APRONS

PR144 'Annex' Oxford Bib Apron ■ Faux leather neckband with buckle and rivet detail, Faux leather cloth holder and side tabs with rivet detail, Centre pocket, Double D-ring fastening to the waist ■ 100% Cotton Yarn Dyed Oxford Weave, 220gsm ■ 4 colours



BLACK

NAVY

BURGUNDY

MOSS

'ESPRESSO' BIB APRON

60"

PR123 'Espresso' Bib Apron ■ Faux leather trim and neckband, Press stud buttons on neckband for height adjustment, Two handy pleat pockets measuring 13cm ■ 65% Polyester, 35% Cotton with faux leather trim, 195gsm ■ 4 colours



■ Faux leather trim



■ Two handy pleat pockets



PR123



PR129

85"

BLACK FAUX LEATHER

BLACK REVERSE DENIM

BROWN STRIPE

BROWN FAUX LEATHER

NAVY STRIPE

INDIGO REVERSE DENIM

PR119



CROSS-BACK 'BARISTA' BIB APRON

PR129 Cross-Back 'Barista' Bib Apron ■ Supplied with self-fabric straps, Alternative interchangeable straps available (PR119), Front centre pocket with built-in pen slot ■ Canvas: 100% Cotton, 320gsm. Denims: 70% Cotton, 30% Polyester, 265gsm ■ 8 colours

Choose alternative Apron straps for an individual look

PR119 Cross-Back Interchangeable Apron Straps ■ Alternative straps for PR129 Cross Back 'Barista' Bib Apron, Fixed with a buckle fastener to hook on to the main body of the apron, Measuring 170cm x 3cm ■ Striped: 100% Polyester. Denim: 70% Cotton, 30% Polyester. Faux Leather: 100% Polyurethane ■ Colour: 6 as listed



'CALIBRE' COTTON CANVAS APRONS

PR130 'Calibre' Heavy Cotton Canvas Bib Apron ■ Full bib Apron measuring 86cm long by 72cm wide, Heavyweight and durable, Oversized eyelet for knotted neckband ■ 100% Cotton Canvas, 320gsm ■ 8 colours

PR131 'Calibre' Heavy Cotton Canvas Waist Apron ■ Mid-length waist Apron measuring 50cm long by 70cm wide, Heavyweight and durable, Metal eyelets secure 90cm self fabric waist ties ■ 100% Cotton Canvas, 320gsm ■ 8 colours



■ Oversized eyelet for neckband



BLACK

NAVY

DARK GREY

SILVER

NATURAL

KHAKI

BURGUNDY

RED

PREMIER
UNIFORMS THAT WORK FOR YOU



PR137 'Calibre' Heavy Cotton Canvas Pocket Apron ■ Four 'kangaroo' style stitched pockets, Oversized eyelet for knotted neckband, Heavyweight and durable ■ 100% Cotton Canvas, 320gsm ■ 8 colours



'CHINO' COTTON APRONS

PR132 'Chino' Bib Apron ■ Full bib Apron measuring 86cm long by 72cm wide, 'Chino' style stitched pockets with rivets, Neckband with buckle and adjustable snap button fastening ■ 100% Cotton, 235gsm ■ 4 colours

PR133 'Chino' Waist Apron ■ Short waist Apron measuring 60cm wide by 33cm long, 'Chino' style waistband and faux fly, Metal eyelets secure 90cm self fabric ties ■ 100% Cotton, 235gsm ■ 4 colours



■ 'Chino' style waistband with faux fly and metal button fastening

■ 'Chino' style pocket with rivets



ECO-FRIENDLY OPTIONS



Staying true to our objective to minimise our environmental impact, we continue to work with our manufacturing partners to ensure that there is complete clarity in our supply chain, so you can be sure that we are working to the highest ethical, social and environmental standards we can.

Our latest commitment to our objective sees us launch range of sustainable products that have been farmed in the most resourceful manner and made from the most natural materials.

Let's take a look at what makes these products sustainable.



**CERTIFIED
ORGANIC
COTTON**

Organic cotton is grown without the use of toxic pesticides and synthetic fertilizers, therefore have a low impact on the environment. Certification is awarded to producers who use recognised agricultural methods and who farm the most natural resources.



**RECYCLED
POLYESTER**

The Polyester element in our PR120 Apron is made entirely from plastic bottles – making it 100% recycled! Using existing plastics means there less extraction of raw materials, resulting in less carbon emissions and of course there the benefit of keeping it away from our landfills. Recycled polyester gives in the same technical fabric performance, but with a lesser carbon footprint.



**CERTIFIED
FAIRTRADE
COTTON**

The Fairtrade Foundation awards farmers and growers with a Fairtrade status that enables that they get a fair price and better trade conditions for the cotton they produce and they sell. This in-turn allows them to improve their living conditions and makes for a more socially conscientious supply chain.

THE COTTON IN OUR SUSTAINABLE APRONS AND SHIRTS IS BOTH ORGANIC AND FAIRTRADE CERTIFIED.

SUSTAINABLE SHIRTS – SEE PAGE 27



DENIM COTTON BIB APRON - ORGANIC & FAIRTRADE CERTIFIED

PR113 Denim Cotton Bib Apron - Organic & Fairtrade Certified ■ Two mitred pockets measuring 20cm deep x 19.5cm wide, Antique brass/gun mental buckle on neckband for height adjustment, 80cm long x 72cm wide with 107cm long ties, Care label printed on the underside that highlights the eco-friendly properties of this style ■ 100% Cotton, Organic & Fairtrade Certified, 235gsm ■ 3 colours





A SUSTAINABLE SERVING

NEW

PR120 Recycled Polyester and Cotton Bib Apron, Organic & Fairtrade Certified ■ Two slanted side pockets measuring 24cm depth by 18cm wide, Adjustable buckle on neckband, Care label printed on the underside that highlights the eco-friendly properties of this style ■ 65% Recycled Polyester, 35% Cotton, Organic & Fairtrade Certified, 280gsm ■ 5 colours



INCLUDES





20
Colours

ROYAL	TURQUOISE
NAVY	LIME
APPLE	BOTTLE
BROWN	NATURAL
KHAKI	ORANGE
BLACK	DARK GREY
SILVER	WHITE
STEEL	PURPLE
AUBERGINE	HOT PINK
BURGUNDY	RED

COTTON APRONS - ORGANIC & FAIRTRADE CERTIFIED



PR112 Cotton Bib Apron, Organic & Fairtrade Certified ■ Sliding adjustable buckle on neckband, Centre pocket, Width 60cm, Length 84cm ■ 100% Cotton - Fairtrade Certified, 200gsm ■ Colour: Black

PR114 Cotton Waist Apron, Organic & Fairtrade Certified ■ 90cm self-fabric ties, Width 70cm, Length 50cm ■ 100% Cotton - Fairtrade Certified, 200gsm ■ Colour: Black



100% COTTON APRON - ORGANIC CERTIFIED



PR102 100% Organic Cotton Bib Apron ■ Self-fabric ties, Self-fabric neckband, Width 60cm, Length 87cm ■ 100% Cotton - Organic Certified, 240gsm ■ 20 colours





PR150



'COLOURS COLLECTION' BIB APRON

PR150 'Colours Collection' Bib Apron ■ Adjustable buckle on neckband, Self-fabric ties, Two sizes available ■ 65% Polyester, 35% Cotton, 195gsm. Denim: 70% Cotton, 30% Polyester, 265gsm ■ Size: 86cm x 72cm

*Extra large size: 102cm x 91cm (Black and White only)



DARK GREY

CORNFLOWER	ROYAL	MARINE BLUE
NAVY	INDIGO DENIM	BLUE DENIM
CYAN	LIGHT BLUE	PEACOCK
MID BLUE	SAPPHIRE	LILAC
LAVENDER	PURPLE	RICH VIOLET
AUBERGINE	FUCHSIA	MAGENTA
PINK	HOT PINK	RASPBERRY CRUSH
BURGUNDY	RED	SALSA
STRAWBERRY RED	ORANGE	TERRACOTTA
CHESTNUT	BROWN	MOCHA
MUSHROOM	LATTE	KHAKI
NATURAL	CAMEL	MUSTARD
SUNFLOWER	YELLOW	LEMON
LIME	OASIS GREEN	OLIVE
AQUA	DUCK EGG BLUE	TURQUOISE
TEAL	EMERALD	KELLY
PISTACHIO	APPLE	BOTTLE
SAGE	WHITE*	BLACK DENIM
GREY DENIM	SILVER	STEEL
CHARCOAL	DARK GREY	BLACK*

40

Colours



PR151 'Colours Collection' Mid-Length Apron ■ Mid-length waist apron, 90cm self fabric ties, Width 70cm, length 50cm ■ 65% Polyester, 35% Cotton, 195gsm ■ 40 colours

PR154 'Colours Collection' Bib Apron with Pocket ■ Sliding adjustable buckle on neck band, Width 72cm, length 86cm, Tablet friendly centre pocket with combined pen slot ■ 65% Polyester, 35% Cotton, 195gsm ■ 40 colours



EASY
CARE

NAVY	ROYAL	MARINE BLUE	SAPPHIRE	TURQUOISE	MID BLUE	LIGHT BLUE	AQUA
BURGUNDY	RED	STRAWBERRY RED	HOT PINK	FUCHSIA	PINK	LILAC	WHITE
BROWN	ORANGE	TERRACOTTA	CHESTNUT	MOCHA	KHAKI	LEMON	NATURAL
AUBERGINE	PURPLE	RICH VIOLET	TEAL	EMERALD	OASIS GREEN	LIME	APPLE
BLACK	DARK GREY	BOTTLE	STEEL	SILVER	OLIVE	SAGE	SUNFLOWER

28

Colours



POCKET WAIST APRONS

PR155 'Colours Collection' 3 Pocket Waist Apron

■ Three open pockets: 90cm self-fabric ties, Width 60cm, length 33cm ■ 65% Polyester, 35% Cotton, 195gsm ■ 28 colours

PR158 'Colours Collection' Bar Apron with Pocket

■ Tablet friendly centre pocket with combined pen slot, 90cm self-fabric ties, Width 80cm, length 90cm ■ 65% Polyester, 35% Cotton, 195gsm ■ 28 colours

NAVY	ROYAL	MID BLUE	TURQUOISE	LIGHT BLUE	AQUA
BURGUNDY	RED	HOT PINK	FUCHSIA	LILAC	PINK
BROWN	ORANGE	KHAKI	SUNFLOWER	LEMON	NATURAL
PURPLE	BOTTLE	EMERALD	SAGE	OLIVE	LIME
BLACK	DARK GREY	SILVER	WHITE		

CHILDREN'S APRON

PR149 'Colours Collection' Children's Bib Apron ■ Safety release mechanism on neckband, Infant sizing: 43cm wide, 53cm long, Junior sizing: 48 wide, 63cm long ■ 65% Polyester, 35% Cotton, 195gsm ■ Sizes: Infant 3-6 years, Junior 7-10 years ■ 16 colours



16

Colours

PR149



85°

BIB APRON

POWERED BY, HEIQ VIROBLOCK*

PR996 Bib Apron ■ Powered by HeiQ Viroblock, an antimicrobial textile technology designed to kill microbes, germs and bacteria on the fabric surface, Buckle on the neckband for height adjustment, 86cm long x 72cm wide, Self fabric ties ■ 65% Polyester, 35% Cotton, powered by HeiQ Viroblock, 195gsm ■ One size ■ 5 colours



HEIQ VIROBLOCK

Powered by HeiQ Viroblock a world-leading innovative Swiss textile technology.

*Please read disclaimer on page 144

10

Colours

2 IN 1 APRON

PR159 'Colours Collection' 2-in-1 Apron ■ One apron worn two ways, Bib and waist apron styles, Pocket features on both styles ■ 65% Polyester, 35% Cotton, 195gsm ■ 10 colours



85°

Can be worn as a bib apron, doubles over and neck ties are secured away to form a waist apron.

NEW



PR996

CONTRAST APRONS

PR162 'Colours Collection' Contrast Bib Apron ■ Colour contrasting vertical panel, Sliding adjustable buckle on neckband, Two front slanted pockets ■ 65% Polyester, 35% Cotton, 195gsm ■ 7 colours



ECONOMY APRONS

PR165 'Essential' Bib Apron ■ Classic bib apron, Width 67cm, length 78cm, 75cm self-fabric ties ■ *Black: 80% Polyester, 20% Cotton. Colours: 65% Polyester, 35% Cotton, 170gsm ■ 6 colours



6
Colours

85°



ZIP POCKET WAIST APRON

PR105 Zip Pocket Waist Apron ■ Two zipped closed pockets, Centre open pocket, Width 60cm, length 33cm ■ 65% Polyester, 35% Cotton, 195gsm ■ Colour: Black



85°



PR167 Polyester Bib Apron ■ Adjustable sliding buckle on neckband, Width 72cm, length 86cm, 90cm self-fabric ties ■ 100% Polyester, 195gsm ■ 4 colours



PR167

40°



PR145



60°

PR145 Children's Waterproof Apron ■ Safety release mechanism on neckband, Waterproof fabric, 50cm self-fabric ties ■ 100% Polyester with Polyurethane coating, 110gsm ■ Sizes: Infant 3-6 years, Junior 7-10 years ■ 8 colours



2 NEW
COLOURS

WATERPROOF APRONS

PR115 Waterproof Bib Apron ■ Adjustable buckle on neckband, Waterproof and bleach resistant fabric, 90cm self fabric ties ■ 100% Polyester with Polyurethane coating, 110gsm ■ 8 colours



PR115

60°



2 NEW
COLOURS

WATERPROOF WRAP AROUND TUNIC

NEW

PR174 Waterproof Wrap Around Tunic ■ Waterproof and bleach resistant, V-neck styling, Double centre pocket, Flattering feminine fit measuring 86cm in length ■ 100% Polyester with Polyurethane coating, 110gsm ■ Sizes: **S/M – L/XL** ■ 4 colours



'TULIP' WRAP AROUND TUNIC

PR177 'Tulip' Wrap-Around Tunic ■ Over-the-head style, V-neck styling, Centre patch pocket ■ 100% polyester, 185gsm ■ Sizes: **S-M/10-12, L-XL/14-16** ■ 4 colours



FASTENING TIP
Bring the ties from back to front and tie round your waist on the underside, then take front ties and fasten at the back.

TABARDS

PR172 Long Length Pocket Tabard ■ Pull-on coverall with a length of 78cm, Side tabs with adjustable press stud fastening, Centre pocket ■ 65% Polyester, 35% Cotton, 195gsm ■ Sizes: **S/10 – XL/16** ■ 3 colours



PR172

18
Colours



PR171



85°

PR171 Pocket Tabard ■ Pull-on coverall with a length of 68cm, Side tabs with adjustable press stud fastening, Centre pocket ■ 65% Polyester, 35% Cotton, 195gsm ■ Sizes: **S/10 – 3XL/20** ■ 18 colours

CHEFSWEAR

FEEDING THE NATION

Whilst chef and the team prepare our favourite dishes, we've prepared a collection of chefswear that stands up to the rigours of this demanding industry. Tough durable fabrics that can withstand high wash temperatures ensure a clean turnout for service.



ZIPPED CHEF'S JACKETS

PR906 Chef's Zip-Close Short Sleeve

Jacket ▪ Zip through fastening, Double pen pocket on left sleeve, Colour contrast underarm, Mandarin collar ▪ White: 65% Polyester, 35% Cotton, 170gsm, Denim: 60% Cotton, 40% Polyester, 230gsm ▪ Sizes: XS/30" – 2XL/50" ▪ 3 colours

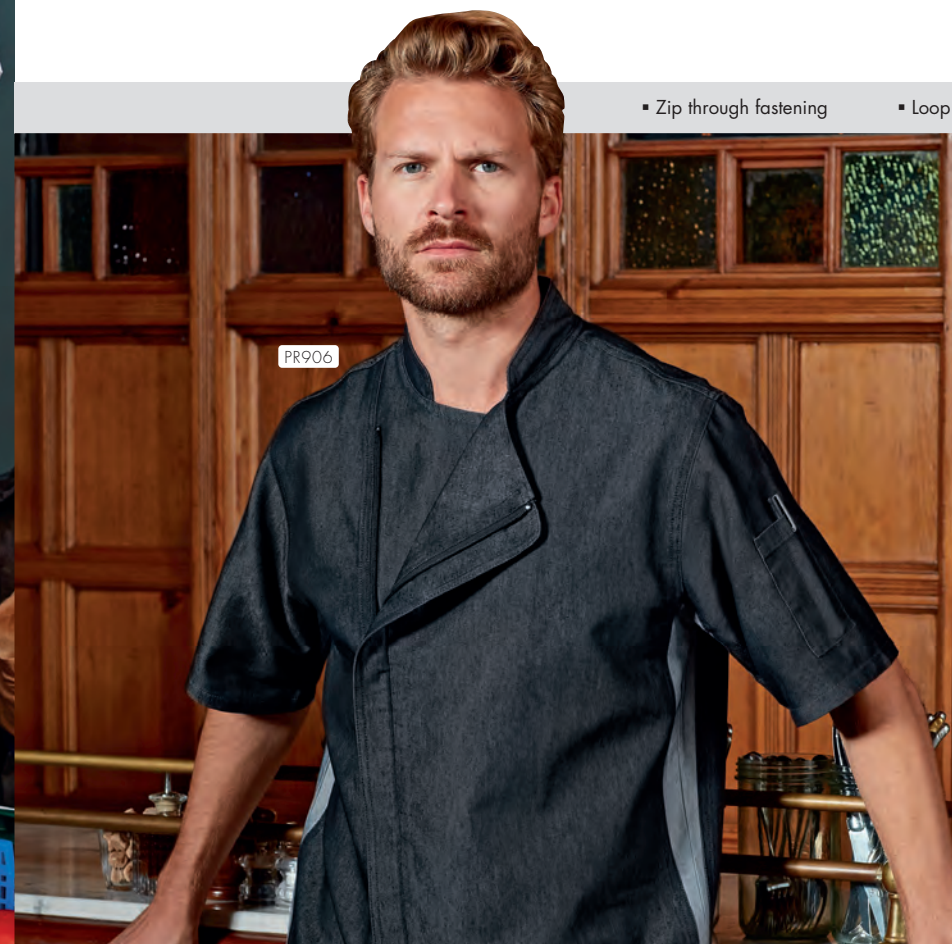


EASY
CARE

▪ Zip through fastening

▪ Loop for hanging

▪ Underarm colour contrast



'ESSENTIAL' CHEF'S JACKETS

PR901 'Essential' Long Sleeve Chef's Jacket ■ Five button wrap over fastening, Long life resin buttons, Double pen pocket on left sleeve, Mandarin collar ■ 65% Polyester, 35% Cotton, 170gsm ■ Sizes: XS/30" – 4XL/58" ■ 2 colours



PR900 'Essential' Short Sleeve Chef's Jacket ■ Five button wrap over fastening, Long life resin buttons, Mandarin collar ■ 65% Polyester, 35% Cotton, 170gsm ■ Sizes: XS/30" – 4XL/58" ■ 2 colours

EASY CARE



PR657

CLASSIC CHEF'S JACKETS

PR656 Short Sleeve Chef's Jacket ■ Ten button hole wrap over fastening, Double pen pocket on left sleeve, Mandarin collar ■ 65% Polyester, 35% Cotton, 195gsm ■ Sizes: XS/30" – 4XL/58" ■ 3 colours

PR657 Long Sleeve Chef's Jacket ■ Ten button hole wrap over fastening, Double pen pocket on left sleeve, Mandarin collar ■ 65% Polyester, 35% Cotton, 195gsm ■ Sizes: XS/30" – 4XL/58" ■ 3 colours



EASY
CARE



BLACK



BLACK



STEEL



STEEL



WHITE



WHITE

PR656





PR903

COOLCHECKER® CHEF'S JACKETS

PR902 Coolchecker® Short Sleeve Chef's Jacket ■

Coolchecker® fabric mesh back panel, Double pen pocket on left sleeve, Self-fabric ten button fastening

■ 65% Polyester, 35% Cotton, 170gsm ■ Sizes: XS/30" – 2XL/50" ■ 2 colours

PR903 Coolchecker® Long Sleeve Chef's Jacket ■

Coolchecker® fabric mesh back panel, Double pen pocket on left sleeve, Self-fabric ten button fastening

■ 65% Polyester, 35% Cotton, 170gsm ■ Sizes: XS/30" – 2XL/50" ■ 2 colours



EASY
CARE



COOL
CHECKER

Coolchecker® fabric mesh back panel and loop for hanging



PR902

NEW

COOL
CHECKER



WHITE

BLACK



WHITE

BLACK

Coolchecker® fabric mesh back panel



PRESS-STUD JACKETS

PR664 Short Sleeve Studded Chef's Jacket ▪ Mandarin collar, Ten press-stud fastening, Wrap over style ▪ 65% Polyester, 35% Cotton, 195gsm ▪ Sizes: **XS/30"** – **3XL/54"** ▪ 2 colours

PR665 Long Sleeve Studded Chef's Jacket ▪ Mandarin collar, Ten press-stud fastening, Wrap over style ▪ 65% Polyester, 35% Cotton, 195gsm ▪ Sizes: **XS/30"** – **3XL/54"** ▪ 2 colours



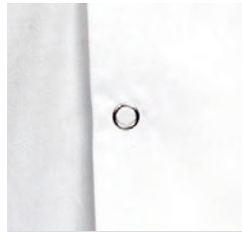
BLACK

WHITE

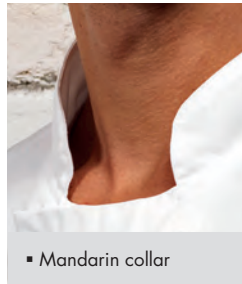


BLACK

WHITE



▪ Press-stud fastening



▪ Mandarin collar



PR660



DENIM CHEF'S JACKET

PR660 Denim Chef's Jacket ▪ Cotton rich chef's jacket, Cross-over front fastening, Ten press-stud fastening ▪ 60% Polyester, 40% Cotton, 230gsm ▪ Sizes: **XS/30"** – **3XL/54"** ▪ 2 colours



BLACK DENIM

GREY DENIM



- Ten button hole wrap over fastening
- Double pen pocket on left sleeve



WOMEN'S STYLES

PR670 Women's Short Sleeve Chef's Jacket ▪ Ten button hole wrap over fastening, Double pen pocket on left sleeve, Back panels for a more fitted style ▪ 65% Polyester, 35% Cotton, 195gsm ▪ Sizes: **XS/8 – 2XL/18** ▪ 1 colour

PR671 Women's Long Sleeve Chef's Jacket ▪ Ten button hole wrap over fastening, Double pen pocket on left sleeve, Back panels for a more fitted style ▪ 65% Polyester, 35% Cotton, 195gsm ▪ Sizes: **XS/8 – 2XL/18** ▪ 1 colour



WHITE



EASY CARE

LONG SLEEVE 'CUISINE' CHEF'S JACKET

PR661 Long Sleeve 'Cuisine' Chef's Jacket ▪ Mandarin collar, Comes with Black removable studs (other colours available, see page 127), Ten hole wrap fastening ▪ 65% Polyester, 35% Cotton, 195gsm ▪ Sizes: **XS/30" – 4XL/58"** ▪ 2 colours



WHITE

BLACK



EASY CARE

CHEF'S T-SHIRT

PR649 Chef's Coolchecker® T-Shirt ▪ Crew neck styling, Coolchecker® fabric back panel, Underarm vent holes, Double pen pocket on left sleeve ▪ 100% Polyester, 135gsm ▪ Sizes: **XS/30" – 3XL/54"** ▪ 2 colours



WHITE

BLACK



MODERN FIT



PR661



PR649

- Underarm vent holes

COOL
CHECKER

CHEF'S ACCESSORIES



PR653 Chef's Skull Cap
▪ Flat top, Elasticated fit, One size fits all ▪ 65% Polyester, 35% Cotton, 195gsm. Denim: 60% Cotton, 40% Polyester, 230gsm ▪ 9 colours



PR648 Turn Up Chef's Hat ▪ Turn up double edge band, Five eyelets for ventilation, Four sizes available ▪ 65% Polyester, 35% Cotton, 195gsm ▪ Sizes: S 54cm, M 57cm, L 60cm, XL 63cm ▪ 2 colours



PR658 Chef's Zandana ▪ Two ties at the back, Elasticated fit, Neck flap ▪ 65% Polyester, 35% Cotton, 195gsm ▪ 2 colours



PR110 Striped Bib Apron ▪ Butcher's style apron, 90cm self-fabric ties and neck band, Width 72cm, length 101cm ▪ 100% Cotton, 240gsm. Black/Grey: 65% Polyester, 35% Cotton, 195gsm ▪ 3 colours



†BLACK/WHITE BLACK/GREY †NAVY/WHITE



PR652 Chef's Jacket Studs ▪ Removable studs, For use with PR661 Cuisine Chef's Jacket (pg 125), Sold in bags of 12 ▪ Durable plastic, Wipe clean ▪ 3 colours



CHEF'S TROUSERS



BLACK & WHITE CHECK



*BLACK



BLACK



NAVY & WHITE CHECK



BLACK & WHITE CHECK

PR554 Chef's 'Select' Slim Leg Trousers ■ Fitted style on lower leg, Patch pocket on right leg, Elasticated waist with draw cord and zip fly fastening ■ 65% Polyester, 35% Cotton, 195gsm ■ Sizes: **XS/28"** – **2XL/44"** ■ 1 colour

PR552 Pull-On Chef's Trousers ■ Elasticated waist, Zip fly, 30.5"/77cm inside leg ■ 65% Polyester, 35% Cotton, 195gsm ■ Sizes: **XS/28"** – **2XL/44"** ■ 2 colours

PR553 'Essential' Chef's Trousers ■ Elasticated waist, Swing pockets, 30.5"/77cm inside leg ■ 65% Polyester, 35% Cotton, 195gsm ■ Sizes: **XS/28"** – ***4XL/48"** ■ 2 colours

*only available in Black



PR556

INDIGO DENIM



PR555

BLACK



BLACK DENIM

PR556 Chef's 'Artisan' Jogger Bottoms ■ Cuffed ankle, Elasticated waistband, draw cord and belt loops, Soft and stretchy fabric ■ 87% Cotton, 12% Polyester, 1% Elastane, 230gsm ■ Sizes: **XS/28"** – **2XL/44"** ■ 2 colours



PR555 'Essential' Chef's Cargo Pocket Trousers ■ Two mobile friendly cargo pockets, Elasticated waistband, Draw cord ■ 65% Polyester, 35% Cotton, 195gsm ■ Sizes: **XS/28"** – **3XL/46"** ■ 1 colour



■ Draw cord waist

BEAUTY, SPA AND SALONWEAR

YOUR UNIFORM STYLIST

A smart collection of uniforms for staff working in beauty, salon, spa, housekeeping and healthcare environments. Our tunics are a fashionable choice and are available in a range of colours, sizes and fabric finishes.



PR683



PR536

STRAIGHT
FIT



PR688



PR685

Verbena

PR685 Linen-Look Button-Up Beauty Tunic ■ Banded style collar, Buttoned placket, Three quarter sleeves ■ 100% Polyester, 160gsm ■ Sizes: **XS/8 – 5XL/24** ■ 3 colours



LINEN-LOOK FABRIC



HEATHER GREY

HEATHER BLACK

HEATHER BLUE

Iris

PR536 Women's Straight Leg Trousers ■ Trouser with a deep waistband, YKK fastening zip, Cross over waistband with two button fastening ■ 100% Polyester, 185gsm ■ Sizes: **XS/8 – 5XL/24**, Regular leg 31"/79 cm, *Long leg 34"/86 cm ■ 4 colours



BLACK*

HEATHER BLACK

HEATHER BLUE

HEATHER GREY

Viola

PR688 Linen-Look V-Cut Beauty Tunic ■ Open pockets to the sides, Round neck with v-cut, Concealed zip back ■ 100% Polyester, 160gsm ■ Sizes: **XS/8 – 5XL/24** ■ 3 colours



EASY
CARE



HEATHER GREY

HEATHER BLACK

HEATHER BLUE

PR690



PR691



PR683



Blossom

PR683 Asymmetric Button Tunic ■
 Flattering feminine fit with bust and back darts, Mandarin collar, Concealed zip through fastening and press stud ■ 100% Polyester, 185gsm ■ Sizes: **2XS/6 – 5XL/24** ■ 7 colours



Rose

PR690 Wrap Satin Trim Tunic ■
 Flattering feminine fit with bust and back darts, Satin trim creating the illusion of a wrap tunic, Pull-on style with back zip fastening ■ 100% Polyester, 185gsm ■ Sizes: **2XS/6 – 5XL/24** ■ 1 colour



EASY CARE

40°

Ivy

PR691 Contrast Neck Tunic ■
 Flattering feminine fit with bust and back darts, Crossover neckline with contrast coloured trim, Pull-on style with back zip fastening ■ 100% Polyester, 185gsm ■ Sizes: **2XS/6 – 5XL/24** ■ 4 colours



EASY CARE

12

Colours

Orchid

PR682 Beauty & Spa Tunic ■ Flattering feminine fit with bust and back darts, Mandarin collar, Eight 'bar' button fastening ■ 100% Polyester, 185gsm ■ Sizes: **2XS/6 – 5XL/24** ■ 12 colours



Camellia

PR686 Feature Zip Tunic
■ Flattering feminine fit with bust and back darts, Cross over neckline, Pull-on style with front feature zip ■ 100% Polyester, 185gsm ■ Sizes: **2XS/6 – 5XL/24**
■ 1 colour



Mika

PR681 Feature Button Tunic
■ Flattering feminine fit with bust and back darts, Four sparkly feature buttons embellished on the trim, Pull-on style with back zip fastening ■ 100% Polyester, 185gsm ■ Sizes: **2XS/6 – 5XL/24**
■ 1 colour



Salon Essentials



PR116 Waterproof Salon Gown ■ Suitable for salons and barbers, 145cm long by 123cm wide, Waterproof and bleach resistant, Adjustable tear release fastening at the back ■ 100% Polyester with Polyurethane coating, 110gsm ■ 2 colours



PR118 All Purpose Waterproof Gown ■ Waterproof and bleach resistant, Adjustable tear release fastening, Elasticated cuffs, Two side pockets, Shaped fit to the body ■ 100% Polyester with Polyurethane coating, 110gsm ■ 3 colours



Back detail



NEW



PR115 Waterproof Bib Apron ■ Adjustable buckle on neckband, Waterproof and bleach resistant, 90cm self fabric ties ■ 100% Polyester with Polyurethane coating, 110gsm ■ 8 colours



2 NEW COLOURS



NEW

Waterproof, bleach resistant salon gowns

PR117 Long Sleeve Waterproof Salon Gown ■ Waterproof and bleach resistant for use in salons and barbers, Elasticated cuffs, Adjustable tear release fastening ■ 100% Polyester with Polyurethane coating, 110gsm ■ 1 colour





- 1 PR617 – See page 62
- 2 PR115 – See page 138
- 3 PR796 – See page 71
- 4 PR556 – See page 129



- 1 PR218 – See page 37
- 2 PR174 – See page 108
- 3 PR796 – See page 71
- 4 PR556 – See page 129



- 1 PR995 – See page 66
- 2 PR996 – See page 103
- 3 PR799 – See page 73
- 4 PR556 – See page 129

Clean up on style



- 1 PR630 – See page 60
- 2 PR171 – See page 111
- 3 PR799 – See page 73
- 4 PR556 – See page 129



- 1 PR118 – See page 139
- 2 PR799 – See page 73
- 3 PR556 – See page 129

Key styles For key workers

PR605 'Daisy' Healthcare Tunic ■ V-neck styling, Concealed zip fastening with press stud, Two curved front pockets, Contrast trim on neckline, sleeves and pockets ■ 65% Polyester, 35% Cotton, 195gsm ■ Sizes: **XS/8 – 5XL/24** ■ 3 colours



PR514 'Poppy' Healthcare Trouser ■ Cross over waistband with two button fastening, Zip fly, Belt loops, Two slanted front pockets ■ 65% Polyester, 35% Cotton, 195gsm ■ Sizes: **XS/8 – 5XL/24** ■ 1 colour



PR605

PR514



PR604 'Vitality' Healthcare Tunic ■ Soft collar styling, Concealed zip fastening and press stud, Two slanted front pockets, Contrast trim on neckline, sleeves and pockets ■ 65% Polyester, 35% Cotton, 195gsm ■ Sizes: **XS/8 – 5XL/24** ■ 3 colours



PR604



OUR ETHICAL POLICY

People, Production & The Planet

CERTIFICATIONS OF COMPLIANCE

At Premier we take our Corporate Social Responsibility very seriously and we continue to invest to ensure that the long term vision for the company is sustainable in relation to the environment and the people that live and work alongside us.

We are able to provide you with copies of our certifications of compliance, so you can be assured that we are working to the highest ethical, social and environmental standards we can.

OEKO-TEX® STANDARD 100

OEKO-TEX® Standard 100 is an independent testing and certification system for textiles which highlights the use of any dangerous substances that could be harmful to human health.

At every stage of production Premier fabrics have passed the recognised criteria, proving that no such chemicals have been used during any stage of production. All products that are manufactured from OEKO-TEX® Standard 100 approved fabric have the logo visible on the product page on the Premier website.

Visit www.oeko-tex.com to learn more about OEKO-TEX® Standard 100 testing.

AMFORI BUSINESS SOCIAL COMPLIANCE INITIATIVE (BSCI)

The amfori Business Social Compliance Initiative (BSCI) is an industry-driven movement that aims to monitor and assess workplace standards across the global supply chain.

WORLDWIDE RESPONSIBLE ACCREDITED PRODUCTION (WRAP)

WRAP is an independent body which gives certification to factories that meet criteria in relation to facilities, production and working practices for employees.

All of the Premier garments that are produced outside of the United Kingdom have been made in WRAP or BSCI certified factories. The garments that are produced in the UK are made in factories that adhere to 'European Agency Health and Safety at Work' regulations. All garments that are produced in WRAP or BSCI certified factories have the logo visible on the product page on the product page on the Premier website.

Visit www.wrapcompliance.org to learn more about WRAP accreditation.

Visit www.amfori.org for more information on the BSCI initiative.

SEDEX

Sedex is one of the world's leading ethical trade membership organisation, working with businesses to improve working conditions in global supply chains.

Visit www.sedex.com to learn more.

Read more about our ethical policy at: www.premierworkwear.com



DISCLAIMERS

FACE COVERINGS DISCLAIMER: Premier Face Coverings, PR796, PR798 and PR799 are designed to aid defence against the spread of infection. We make no assurances that they can prevent transmission or infection of disease or viruses. They are not medical or clinical face masks and as such should not be used for this purpose. They should not be used in areas where infection level is high and in any exposure to high level heat sources or combustible substances. Remove and do not use then masks if you are suffering breathing difficulties or skin irritation. It is recommended that you wash these products before use.

HEIQ VIROBLOCK DISCLAIMER: The following products have been treated with a biocide to protect them from spoilage by microbes and germs. Active ingredient: silver chloride. PR994, PR995, PR996, PR997 and PR998 are powered by HeiQ Viroblock (technology) and are designed to aid defence against the spread of infection. Premier makes no assurances that they can prevent transmission or infection of disease or viruses. They are not medical or clinical garments and as such should not be used for this purpose. They should not be used under any circumstances where infection level is high and in any exposure to high level heat sources or combustible substances. Remove and do not wear these garments if you are suffering with breathing difficulties or skin irritation. It is recommended that you wash these products before use.

WOMEN'S SHIRTS / POLOS / TEES / KNITWEAR / CHEF'S JACKETS / BEAUTY TUNICS

Call size	2XS	XS	S	M	L	XL	2XL	3XL	4XL	5XL	6XL	7XL	8XL
Size	6	8	10	12	14	16	18	20	22	24	26	28	30
Bust to fit "	31	33	35	37	39	41	43	45	47	49	51	53	55
Bust to fit cm	79	84	89	94	99	104	109	114	119	124	129	134	139

WOMEN'S WAISTCOATS - PR621, PR623 & PR626

Call size	2XS	XS	S	M	L	XL	2XL
Size	6	8	10	12	14	16	18
Bust to fit "	27	29	32	34	37	40	44
Bust to fit cm	72	80	88	96	104	112	120

WOMEN'S TROUSERS & CHINOS - PR514, PR530, PR536 & PR570

Call size	XS	S	M	L	XL	2XL	3XL	4XL	5XL
Size	8	10	12	14	16	18	20	22	24
Waist to fit "	24	26	28	30	32	34	36	38	40
Waist to fit cm	59	64	69	74	79	84	89	94	99

MEN'S COLLARED SHIRTS

PR200, PR202, PR204, PR206, PR207, PR209, PR210, PR212, PR234 & PR236

Call size	S	S/M	M	M/L	L	L/XL	XL	XL/2XL	2XL	2XL/3XL	3XL	4XL	5XL	6XL
Collar "	14½	15	15½	16	16½	17	17½	18	18½	19	20	21	22	23
Collar cm	37	38	39½	41	42	43	44½	46	47	48	50	52	54	56
Chest to fit "	34	36	38	40	42	44	46	48	50	52	54	58	62	66
Chest to fit cm	87	92	96	102	107	111	117	122	127	132	137	147	157	167

MEN'S SOFT COLLARED SHIRTS, TEES, UNISEX CHEF'S JACKETS & KNITWEAR

PR217, PR218, PR220, PR221, PR222, PR238, PR244, PR245, PR246, PR247, PR250, PR252, PR254, PR256, PR258, PR259, PR649

Call size	2XS	XS	S	M	L	XL	2XL	3XL	4XL	5XL
Chest to fit "	28	30	34	38	42	46	50	54	58	62
Chest to fit cm	74	77	87	96	107	117	126	136	146	156

MEN'S WAISTCOATS - PR620, PR622 & PR625

Call size	2XS	XS	S	M	L	XL	2XL
Chest to fit "	30	32	36	40	44	46	52
Chest to fit cm	66	76	86	96	106	116	126

STUDDERED POLO SHIRT - PR610

Call size	S	M	L	XL	2XL	3XL
Chest to fit "	34	38	42	46	50	52
Chest to fit cm	92	100	108	116	124	132

MEN'S COOLCHECKER POLO SHIRTS - PR615, PR617 & PR618

Call size	XS	S	M	L	XL	2XL	3XL	4XL	5XL
Chest to fit "	33	35	37	39	41	44	46	48	51
Chest to fit cm	83	89	94	99	104	112	116	122	130

MEN'S COOLPLUS POLO & COOLCHECKER STUDDERED POLO - PR612, PR630, PR995 & PR997

Call size	XS	S	M	L	XL	2XL	3XL	4XL	5XL	6XL
Chest to fit "	33	35	38	41	44	47	50	53	56	59
Chest to fit cm	83	89	96	104	112	119	122	134	142	150

MEN'S TROUSERS & CHINOS - PR520 & PR560

Call size	XS	S	M	L	XL	2XL	3XL	4XL
Waist to fit "	30	32	34	36	38	40	42	44
Waist to fit cm	76	80	86	92	96	100	106	110

UNISEX CHEF'S TROUSERS - PR552, PR553, PR554, PR555 & PR556

Call size	XS	S	M	L	XL	2XL	3XL	4XL
Waist to fit "	28-30	32-34	34-36	36-38	38-40	42-44	44-46	46-48
Waist to fit cm	71-76	81-86	86-91	91-96	96-101	106-111	111-116	116-126

SIZING



INDEX



SHIRTS

PR200	Men's Long Sleeve Poplin Shirt	8
PR202	Men's Short Sleeve Poplin Shirt	8
PR204	Men's Long Sleeve Fitted Poplin Shirt	11
PR206	Men's Roll Sleeve Poplin Bar Shirt	35
PR207	Men's Poplin Supreme Long Sleeve Shirt	15
PR209	Men's Poplin Supreme Short Sleeve Shirt	14
PR210	Men's Long Sleeve Pilot Shirt	16
PR212	Men's Short Sleeve Pilot Shirt	17
PR217	Men's Cross-Dye Roll Sleeve Poplin Bar Shirt	34
PR218	Men's Long-John Roll Sleeve Tee	37
PR220	Men's Long Sleeve Gingham Cotton Microcheck Shirt	21
PR221	Men's Short Sleeve Gingham Cotton Microcheck Shirt	21
PR222	Men's Jeans Stitch Denim Shirt	30
PR234	Men's Long Sleeve Signature Oxford Shirt	22
PR236	Men's Short Sleeve Signature Oxford Shirt	23
PR238	Men's Cotton Rich Oxford Stripes Shirt	24
PR244	Men's Stretch Fit Cotton Poplin Long Sleeve Shirt	13
PR245	Men's Cotton Slub Chambray Long Sleeve Shirt	25
PR246	Men's Stretch Fit Cotton Poplin Short Sleeve Shirt	12
PR247	Men's Cotton Chambray Shirt - Fairtrade & Organic Cert.	27
PR250	'Mulligan' Check - Men's Long Sleeve Cotton Shirt	31
PR252	'Maxton' Check - Men's Long Sleeve Shirt	18
PR254	'Ginmill' Check - Men's Long Sleeve Cotton Shirt	33
PR256	'Sidehill' Check - Men's Long Sleeve Cotton Shirt	32
PR258	Banded Collar 'Grandad' Long Sleeve Shirt	36
PR259	Men's Denim-Pindot Long Sleeve Shirt	29
PR300	Women's Long Sleeve Poplin Blouse	8
PR302	Women's Short Sleeve Poplin Blouse	8
PR305	Women's Poplin 3/4 Sleeve Blouse	11
PR306	Women's Roll-Sleeve Poplin Bar Shirt	35
PR307	Women's Poplin Supreme Long Sleeve Shirt	15
PR309	Women's Poplin Supreme Short Sleeve Shirt	14
PR310	Women's Long Sleeve Pilot Shirt	16
PR312	Women's Short Sleeve Pilot Shirt	17
PR317	Women's Cross-Dye Roll Sleeve Poplin Bar Shirt	34
PR318	Women's Long John Roll Sleeve Tee	37
PR320	Women's Long Sleeve Gingham Microcheck Shirt	21
PR321	Women's Short Sleeve Gingham Microcheck Shirt	21
PR322	Women's Jeans Stitch Denim Shirt	30
PR334	Women's Long Sleeve Signature Oxford Blouse	22
PR336	Women's Short Sleeve Signature Oxford Blouse	23
PR338	Women's Cotton Rich Oxford Stripes Shirt	24
PR344	Women's Stretch-Fit Cotton Poplin Long Sleeve Shirt	13
PR345	Women's Cotton Slub Chambray Long Sleeve Shirt	25
PR346	Women's Stretch-Fit Cotton Poplin Short Sleeve Shirt	12
PR347	Women's Cotton Chambray Shirt - Fairtrade & Organic Cert.	27
PR350	'Mulligan' Check-Women's Long Sleeve Cotton Shirt	31
PR352	'Maxton' Check - Women's Long Sleeve Shirt	18
PR354	'Ginmill' Check-Women's Long Sleeve Cotton Shirt	33
PR356	'Sidehill' Check-Women's Long Sleeve Cotton Shirt	32
PR359	Women's Denim-Pindot Long Sleeve Shirt	29

SECURITY

PR210	Men's Long Sleeve Pilot Shirt	16
PR212	Men's Short Sleeve Pilot Shirt	17
PR310	Women's Long Sleeve Pilot Shirt	16
PR312	Women's Short Sleeve Pilot Shirt	17

WAISTCOATS

PR620	Men's Hospitality Waistcoat	38
PR621	Women's Hospitality Waistcoat	38
PR622	Men's Lined Polyester Waistcoat	38
PR623	Women's Lined Polyester Waistcoat	38
PR625	Men's Herringbone Waistcoat	39
PR626	Women's Herringbone Waistcoat	39

TIES & SCARVES

PR700	Plain Work Tie	17
PR705	Bow Tie	44
PR710	Clip-on Work Tie	17
PR711	Clip-on Cravat	17
PR715	Epaulettes	17
PR722	Horizontal Striped Tie	44
PR730	'Colours Originals' Plain Business Scarf	42
PR740	'Colours Collection' Plain Chiffon Scarf	38

PR750	'Colours Collection' Satin Tie	40
PR755	'Colours Collection' Satin Clip-on Tie	38
PR760	Multi-Stripe Tie	46
PR762	Four Stripe Tie	46
PR765	'Colours Originals' Fashion Tie	42
PR766	Candy Stripe Tie	44
PR770	Multi-Stripe Scarf	46
PR772	Four Stripe Scarf	46
PR780	Micro Waffle Tie	43
PR781	Micro Dot Tie	43
PR782	Double Stripe Tie	44
PR783	Waffle Stripe Tie	43
PR784	Sports Stripe Tie	44
PR785	'Colours Originals' Fashion Clip-on Tie	42
PR786	Club Stripe Tie	43
PR787	Puppy Tooth Tie	43
PR788	Squares Tie	43
PR789	Slim Knitted Tie	45
PR793	Slim Tie	45
PR795	'Colours Collection' Silk Tie	44

TROUSERS

PR520	Men's Business Trousers	47
PR530	Women's Business Trousers	47
PR536	Women's Straight Leg Trousers	47
PR701	Clip-on Trousers Braces	49

CHINO'S

PR560	Men's Performance Chino Jeans	49
PR570	Women's Performance Chino Jeans	49

KNITWEAR

PR400	'Essential' Acrylic Men's V-Neck Sweater	54
PR402	'Essential' Acrylic Women's Cardigan	54
PR692	Men's Crew Neck Cotton Rich Knitted Sweater	53
PR694	Men's Knitted V-Neck Sweater	50
PR695	Men's Quarter-Zip Knitted Sweater	52
PR696	Women's Knitted V-Neck Sweater	52
PR697	Women's Button-Through Knitted Cardigan	50
PR698	Women's Long Length Knitted Cardigan	52
PR699	Men's V-Neck Sleeveless Sweater	52

POLOS

PR610	Studded Polo Shirt	62
PR612	Coolchecker® Studded Polo Shirt	63
PR615	Men's Coolchecker® Pique Polo Shirt	56
PR616	Women's Coolchecker® Pique Polo Shirt	56
PR617	Men's Long Sleeve Coolchecker® Pique Polo Shirt	62
PR618	Men's Contrast Tipped Coolchecker® Polo Shirt	59
PR619	Women's Contrast Tipped Coolchecker® Polo	59
PR630	Men's Coolchecker® Plus Pique Polo - Coolplus™	60
PR632	Women's Coolchecker® Plus Pique Polo - Coolplus™	60
PR995	Unisex Short Sleeve Polo Shirt, powered by HeiQ Viroblock	66
PR997	Unisex Long Sleeve Polo Shirt, powered by HeiQ Viroblock	66

FACE MASKS & COVERINGS

PR796	3 Layer Face Mask	71
PR797	PM2.5 Activated Carbon Mask Filter	71
PR798	Snood Face Covering	72
PR799	Washable & Reusable Face Covering	73
PR994	3 Layer Face Mask, powered by HeiQ Viroblock	68
PR998	Touch Gloves, powered by HeiQ Viroblock	69

APRONS

PR102	100% Cotton Bib Apron - Organic Cert.	97
PR105	Zip Pocket Waist Apron	104
PR110	Striped Bib Apron	126
PR112	Cotton Bib Apron - Fairtrade Cert.	96
PR113	Cotton Denim Bib Apron - Organic & Fairtrade Cert.	93
PR114	Mid Length Cotton Apron - Fairtrade Cert.	96
PR115	Waterproof Bib Apron	107
PR119	Cross Back Interchangeable Apron Straps	87

PR120	Recycled Polyester & Cotton Bib Apron - Organic & Fairtrade Cert.	95
PR123	'Espresso' Bib Apron	86
PR125	Jeans Stitch Denim Waist Apron	76
PR126	Jeans Stitch Denim Bib Apron	76
PR127	'Domain' Contrast Denim Bib Apron	79
PR128	'Domain' Contrast Denim Waist Apron	79
PR129	Cross Back 'Barista' Bib Apron	87
PR130	'Calibre' Heavy Cotton Canvas Bib Apron	88
PR131	'Calibre' Heavy Cotton Canvas Waist Apron	88
PR132	'Chino' Bib Apron	90
PR133	'Chino' Waist Apron	90
PR134	'District' Waxed Look Denim Bib Apron	80
PR135	'Division' Waxed Look Denim Waist Apron	80
PR136	'Division' Waxed Look Denim Bib Apron with Faux leather	80
PR137	'Calibre' Heavy Cotton Canvas Pocket Apron	88
PR138	'Metro' Utility Hip Apron	82
PR139	Faux Leather Bib Apron	83
PR144	'Annex' Oxford Bib Apron	84
PR145	Children's Waterproof Apron	106
PR149	Children's Bib Apron	102
PR150	'Colours Collection' Bib Apron	99
PR151	'Colours Collection' Mid Length Apron	100
PR154	'Colours Collection' Bib Apron with Pocket	100
PR155	'Colours Collection' Three Pocket Apron	101
PR158	'Colours Collection' Bar Apron with Pocket	101
PR159	'Colours Collection' 2 in 1 Apron	102
PR162	'Colours Collection' Contrast Bib Apron	104
PR165	'Essential' Bib Apron	105
PR167	Polyester Bib Apron	105
PR996	Bib Apron, powered by HeiQ Viroblock	103

TABARDS

PR171	Pocket Tabard	111
PR172	Long Length Pocket Tabard	110
PR174	Waterproof Wrap Around Tunic	108
PR177	'Tulip' Wrap Around Tunic	109

CHEFSWEAR

PR552	Chef's Pull-on Trousers	128
PR553	'Essential' Chef's Trousers	128
PR554	Chef's Slim Fit Trousers	128
PR555	'Essential' Chef's Cargo Pocket Trousers	129
PR556	Artisan Chef's Jogging Trousers	129
PR648	Turn-up Chef's Hat	127
PR649	Coolchecker® Chef's T-shirt	125
PR652	Chef's Jacket Studs	127
PR653	Chef's Skull Cap	126
PR656	Short Sleeve Chef's Jacket	119
PR657	Long Sleeve Chef's Jacket	119
PR658	Chef's Zandana	127
PR660	Chef's Denim Jacket	123
PR661	Chef's Long Sleeve 'Cuisine' Jacket	125
PR664	Chef's Short Sleeve Stud Jacket	122
PR665	Chef's Long Sleeve Stud Jacket	122
PR670	Women's Short Sleeve Chef's Jacket	124
PR671	Women's Long Sleeve Chef's Jacket	124
PR900	'Essential' Short Sleeve Chef's Jacket	117
PR901	'Essential' Long Sleeve Chef's Jacket	116
PR902	Chef's Short Sleeve Coolchecker® Jacket with mesh back panel	120
PR903	Chef's Long Sleeve Coolchecker® Jacket with mesh back panel	120
PR906	Chef's Zip-Close Short Sleeve Jacket	115

BEAUTY & HEALTH

PR115	Waterproof Bib Apron	138
PR116	Waterproof Salon Gown	138
PR117	Long Sleeve Waterproof Gown	139
PR118	All-Purpose Waterproof Salon Gown	139
PR514	Women's 'Poppy' Healthcare Trousers	142
PR536	Ladies 'Iris' Straight Leg Trousers	132
PR604	'Vitality' Healthcare Tunic	143
PR605	'Daisy' Healthcare Tunic	142
PR681	'Mika' Beauty and Spa Tunic	137
PR682	'Orchid' Beauty and Spa Tunic	136
PR683	'Blossom' Beauty and Spa Tunic	135
PR685	'Verbena' Linen Look Button Up Beauty Tunic	133
PR686	'Camellia' Beauty and Spa Tunic	137
PR688	'Viola' Linen Look Cut Neck Beauty Tunic	132
PR690	'Rose' Beauty and Spa Tunic	134
PR691	'Ivy' Beauty and Spa Tunic	134



BUSINESSWEAR
HOSPITALITYWEAR
CHEFSWEAR
BEAUTY & HEALTHCARE
